

Public Leases for Urban Farms



Impact of Urban Farms

San Antonio's underdeveloped public spaces, turned into urban farms, could produce 926 million pounds of vegetables annually, worth over \$1.1 billion per year.

Rosedale Park alone, with 13 acres of undeveloped space, could produce 754,316 pounds worth \$950,000 per year.

In addition, urban farms provide active urban cooling and water infiltration services, and along with STEM education and green jobs.

Definition

UDC, Appendix A, Sec. 35-A101.

Urban farm: A tract of land within city limits, not at one's own residence, on which produce is raised and sold on site or elsewhere. This can include farming and/or greenhouses on vacant lots or acreage.

A farmstand or market may be located on the site. In addition to holding a market, an urban farm may host educational events and/or serve as an event venue, provided that sufficient off-street parking is provided.

Proposal

Lease a minimum of 3 publicly-owned lots for urban farm use. Term of lease of 10 years would apply for individuals or groups who successfully apply.

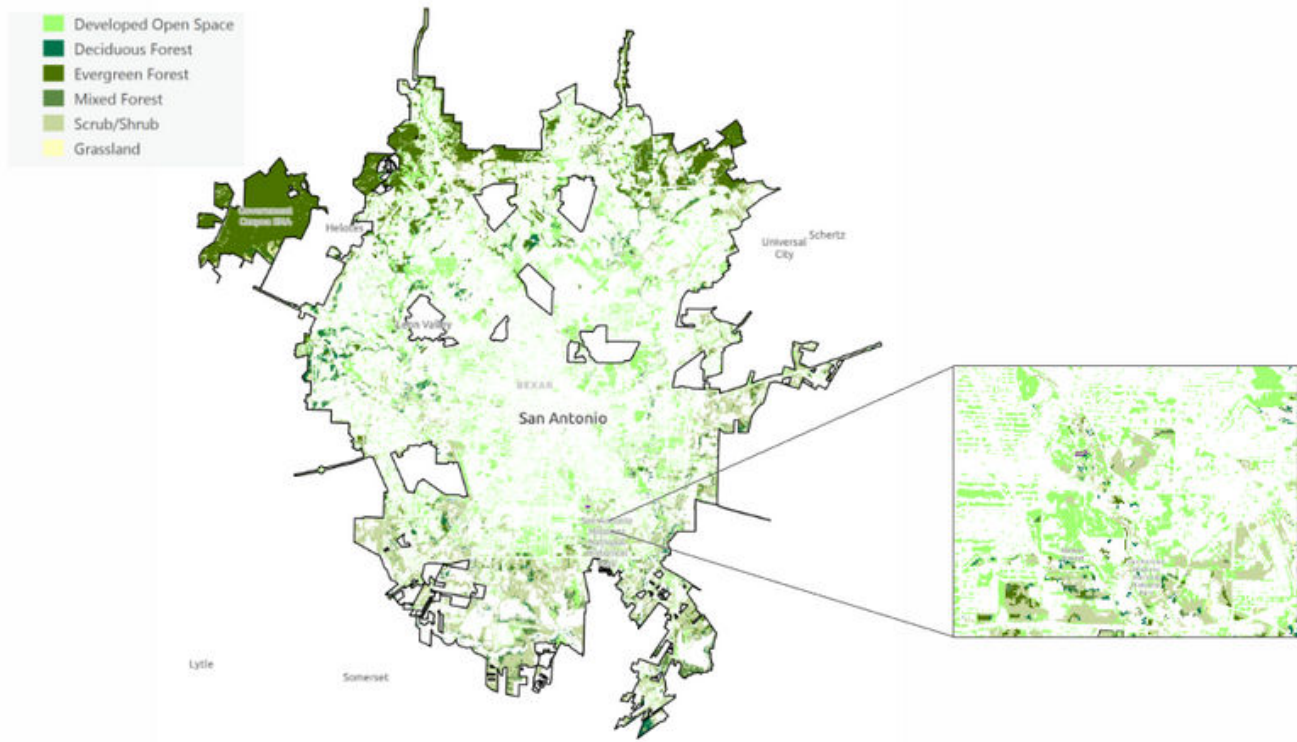
Successful Example

Garcia Street Urban Farm has produced tens of thousands of pounds of produce on San Antonio's east side since 2019 under farm manager Cecile Parrish and the team from Alamo Colleges.

Crops have been both sold and distributed at no cost to the public, and the farm space has served as an active educational hub.



Potential Locations



Lease Terms

- 10 year term
- \$1.00/year
- Water access
- Zoned and permitted for urban farm
- Annual review for continuation
- Provide agricultural workforce development opportunities

Farmer Selection Process

- Food Policy Council develops standardized application process and reviews applications to be approved by COSA
- Applicants must:
 - have proven farming/agricultural experience
 - live in the region
 - commit to regenerative agricultural practices

Funding

- Possible \$20,000-\$40,000 per farm in seed funding
- Possible compensation for workforce training programs