

Earth's Future

RESEARCH ARTICLE

10.1029/2020EF001552

Key Points:

- Water stakeholders should prepare for future droughts that will be unlike past droughts
- Information available from climate projections often does not align with the detailed information needed for water planning
- Better awareness of the mismatch between available and needed information will help inform efforts to close this gap

Supporting Information:

- Supporting Information S1

Correspondence to:

J. W. Nielsen-Gammon,
n-g@tamu.edu

Citation:









Nielsen-Gammon, J. W., Banner, J. L., Cook, B. I., Tremaine, D. M., Wong, C. I., Mace, R. E., et al. (2020). Unprecedented drought challenges for Texas water resources in a changing climate: What do researchers and stakeholders need to know? *Earth's Future*, 8, e2020EF001552. <https://doi.org/10.1029/2020EF001552>

Received 11 MAR 2020

Accepted 25 JUN 2020

Accepted article online 29 JUN 2020

Unprecedented Drought Challenges for Texas Water Resources in a Changing Climate: What Do Researchers and Stakeholders Need to Know?

John W. Nielsen-Gammon¹ , Jay L. Banner^{2,3} , Benjamin I. Cook^{4,5} , Darrel M. Tremaine^{2,3},
Corinne I. Wong^{3,12} , Robert E. Mace⁶, Huilin Gao⁷ , Zong-Liang Yang² ,
Marisa Flores Gonzalez⁸ , Richard Hoffpauir⁹, Tom Gooch¹⁰, and Kevin Kloesel¹¹ 

¹Department of Atmospheric Sciences, Texas A&M University, College Station, TX, USA, ²Department of Geological Sciences, University of Texas at Austin, Austin, TX, USA, ³Environmental Science Institute, University of Texas at Austin, Austin, TX, USA, ⁴NASA Goddard Institute for Space Studies, New York, NY, USA, ⁵Division of Ocean and Climate Physics, Lamont-Doherty Earth Observatory, Palisades, NY, USA, ⁶The Meadows Center for Water and the Environment, Texas State University, San Marcos, TX, USA, ⁷Department of Civil and Environmental Engineering, Texas A&M University, College Station, TX, USA, ⁸Water Forward, City of Austin, Austin, TX, USA, ⁹Hoffpauir Consulting, PLLC, Bryan, TX, USA, ¹⁰Freese and Nichols Inc., Fort Worth, TX, USA, ¹¹College of Atmospheric and Geographic Sciences, University of Oklahoma, Norman, OK, USA, ¹²Now at Facebook, Inc., Austin, TX, USA

Abstract Long-range water planning is complicated by factors that are rapidly changing in the 21st century, including climate, population, and water use. Here, we analyze climate factors and drought projections for Texas as an example of a diverse society straddling an aridity gradient to examine how the projections can best serve water stakeholder needs. We find that climate models are robust in projecting drying of summer-season soil moisture and decreasing reservoir supplies for both the eastern and western portions of Texas during the 21st century. Further, projections indicate drier conditions during the latter half of the 21st century than even the most arid centuries of the last 1,000 years that included megadroughts. To illustrate how accounting for drought nonstationarity may increase water resiliency, we consider generalized case studies involving four key stakeholder groups: agricultural producers, large surface water suppliers, small groundwater management districts, and regional water planning districts. We also examine an example of customized climate information being used as input to long-range water planning. We find that while stakeholders value the quantitative capability of climate model outputs, more specific climate-related information better supports resilience planning across multiple stakeholder groups. New suites of tools could provide necessary capacity for both short- and long-term, stakeholder-specific adaptive planning.

1. Introduction

Climate projections for the 21st century portray “unprecedented” drought risk for the U.S. Southwest and Great Plains (Cook et al., 2015). This presents unprecedented challenges for water managers and stakeholders, as well as unprecedented data needs. What information does the existing state of science provide that is relevant to water planning? What new information is critical for water planning? How can the gap between the available and needed information be closed? The purpose of this paper is to confront these questions for a diverse society straddling an aridity gradient, using issues arising in the state of Texas as an example, and informed by an ongoing multiyear project to facilitate knowledge coproduction among scientists and stakeholders.

Texas is one of the fastest growing states in the nation, with population expected to increase from 29.5 million in 2020 to 51 million in 2070 (TWDB, 2017). Further, the state is located in a subhumid to semiarid environment that is vulnerable to changes in water availability resulting from global climate change. There is significant variation in the extent of water stress across Texas, historically associated with the “100th meridian” (the line of 100°W longitude), which approximates the location of the wet-dry (east-west) transition across the center of the state (Powell, 1879; Seager, Feldman, et al., 2018; Seager, Lis, et al., 2018).

©2020. The Authors.

This is an open access article under the terms of the Creative Commons Attribution License, which permits use, distribution and reproduction in any medium, provided the original work is properly cited.

Surface and groundwater resources are essential Texas water supplies, and the strong east-west climatic gradient drives a range of supply to demand ratios (Seager, Feldman, et al., 2018; Seager, Lis, et al., 2018). Damming and water withdrawals from rivers threaten both terrestrial and coastal ecosystems that provide habitat to threatened and endangered species and support coastal communities and economies (Montagna & Kalke, 1992). The state's historical water use has been primarily for agricultural purposes. Population growth is now driving a shift in water prioritization from rural to urban areas. Irrigation and municipal use are projected to comprise 51% and 28%, respectively, of water need in 2020, compared with 36% and 39% in 2070 (TWDB, 2017).

The uncertainty in future water availability is substantial (Schewe et al., 2014; Taylor et al., 2013). Texas, like a number of other regions in the world, is currently water stressed (Oki & Kanae, 2006). Increasing temperatures, decreasing water availability, and increasing heat and precipitation extremes will further exacerbate known challenges to water resilience (Kloesel et al., 2018), which for the purposes of this study denotes the ability to satisfy water needs under a range of changes in supply and demand, including those driven by changes in population and climate.

Texas follows a regional approach to water planning, with a 5-year planning cycle beginning at the local level, then expanding to regional water planning groups, and concluding at the state level (Bruun, 2017). The most recent Texas State Water Plan assesses water supply and demand over a 50-year horizon and provides a cost analysis of implementing management strategies designed to meet demand where and when it exceeds supply (TWDB, 2017). Texas water planning is based on the goal of having an adequate supply of water to meet the needs of future water users even if the worst drought in history, the “drought of record”, returns. In most parts of the state, the drought of record is the 6-year drought of the 1950s, the worst drought in the 125 years of the instrumental record (Cook et al., 2019; McGregor, 2015; Moore, 2005; Nielsen-Gammon, 2012).

The state water plan, like much water planning throughout Texas, is based on a rear-view mirror approach that focuses on historical data and patterns of drought. This record-driven approach has the virtue of grounding modeling and planning around actual measured and monitored droughts, and the 5-year updates allow it to respond to recent climatic changes. This top-level state water plan, however, does not take into consideration potential declines in water supply related to future climate change. For example, the state plan reports only a 3% decrease in surface water availability from 2020 to 2070, which is related to reductions in reservoir storage that will be induced by infilling of the reservoirs with sediment. The plan states that forecasts of future changes in water resources due to climate change are not used due to a lack of reliable, usable estimates of such changes. In the current state planning system, planners can opt to include “extra” water supplies to guard against droughts worse than the drought of record. Yet no tools are provided to assist in such planning, and the political hurdle of explicitly addressing climate change presents its own challenge (Kirchhoff & Dilling, 2016). On the other hand, if climate change was to reduce drought risk, some future planned infrastructure may be unnecessary.

Here we analyze the state of climate in Texas from the combined perspective of past, present, and future changes. We then use projections of future climate to consider possible changes in stakeholder-relevant parameters, such as soil moisture and reservoir storage (for agriculture and resource management stakeholders, respectively). The relevance of future projections is then assessed both from the perspective of hypothetical stakeholders to identify the extent to which information is actionable, incompatible, or unavailable and from the perspective of one municipality that attempted to bridge the gap. We envision this as a first step in an ongoing process of coproduction of knowledge between researchers and stakeholders, consistent with the recommendations of Moss et al. (2019). We anticipate that stakeholders will eventually be able to draw upon readily available projections of relevant parameters to inform local management and planning decisions, with the information contained in those science-based projections driven in part by their actual usefulness for decision making. We also intend that scientists and stakeholders elsewhere can use the Texas situation to identify knowledge, research, and communication gaps in their own communities.

2. The Texas Climate Context

2.1. The Paleoclimate Perspective

Climate change leaves its marks on Texas in many ways. These marks, based on biological, chemical, and physical effects of climate, can be used to reconstruct changes in Texas climate prior to the late 1800s

(Baker et al., 2019; Banner et al., 2007; Cleaveland et al., 2011; Livsey et al., 2016; Musgrove et al., 2001; Wong et al., 2015).

Although they occurred at a much slower pace, the warming and associated shifts in precipitation that occurred over the past 20,000 years may provide a valuable analog to projected 21st century warming. Growth rates of speleothems across central Texas generally increased during past glacial periods, indicating that Texas was wetter during these cold periods (Musgrove et al., 2001). Texas speleothem growth accelerated episodically with the onset of a major glacial melting period that lasted from 14,700 to 12,800 years ago (Feng et al., 2014; Miller & Banner, 2018). This suggests that warming also provides a temporary increase in moisture and exemplifies the complexities in the response of Texas climate to global changes.

The transition to interglacial conditions heralded a warmer and drier climate in Texas, brought an increase in extremes in drought-flood cycles, and led to a significant reduction in soil thickness (Cooke et al., 2003; Toomey et al., 1993). A synthesis of proxy-derived climate reconstructions suggests that between 7,000 and 3,000 years ago, Texas apparently was even warmer but with differing indicators on the amount of effective moisture present (Wong et al., 2015). Within the past 3,000 years, warmer Northern Hemisphere climates corresponded to drier conditions in South Texas, but this may have been due to Atlantic Ocean variability rather than a direct temperature-aridity relationship (Livsey et al., 2016; McCabe et al., 2004).

Tree ring studies are another valuable proxy for understanding the drought history of Texas over the past 1,000 years. Tree ring studies reveal droughts lasting a decade or longer (“megadroughts”) that occurred in Texas each century over the past 1,000 years (Banner et al., 2010; Cleaveland et al., 2011; Cook et al., 2015). In the most intensive drought reconstruction for Texas to date, Cleaveland et al. (2011) found that there were intervals with more severe and/or more protracted drought than the 1950s drought of record. Such paleoclimate events can be used to explore water supply vulnerabilities on different timescales and levels of severity than those encapsulated in the drought of record. As discussed in section 2.3, however, future droughts may differ from past droughts in fundamental ways.

2.2. The Instrument Record

In Texas, historic air temperatures exhibit trend variations that broadly match global air temperature trends, with a general increase during the first part of the twentieth century, a decline between about 1955 and 1975, and an increase thereafter (Figure 1). Texas temperatures are more temporally variable than globally averaged temperatures. Temperature increases have been observed in all parts of the state, with the greatest increases in West Texas (USGCRP, 2017).

Texas precipitation is highly variable. Some of this variability is driven by large-scale weather and climate patterns, such as El Niño and La Niña (Cheng et al., 2018; Hoerling et al., 2013), while much of the variability during the warm season is due to the somewhat random distribution of thunderstorms and tropical disturbances. Overall there has been a long-term upward trend in precipitation in Texas in all seasons, averaging about 8.5% per century (Figure 2). The largest trends have been in central and eastern Texas, while parts of West Texas have seen a decrease (for broader context, see USGCRP, 2017). However, natural variability commonly produces statewide variations of precipitation of 20% or more on a decadal scale.

There has also been an upward trend in extreme precipitation at a variety of timescales (USGCRP, 2017). On a global basis, the increase of extreme rainfall is systematically larger than the increase of overall rainfall, because different processes are driving the changes. This leads to an increase of precipitation variability as well (Pendergrass et al., 2017). We note that an overall increase in rainfall would lead to greater surface and groundwater supply, while a tendency for rain to be more intense would separately favor runoff (and hence surface water supply) over infiltration in those locations where the rain rate regularly exceeds the infiltration rate.

2.3. Climate Interactions Affecting Drought

While precipitation variability is one important driver of change in soil moisture availability, it is by no means the only influence on the surface moisture budget. Soil moisture is also affected by the rate at which water leaves the soil. Downward percolation into aquifers depends on local soil conditions, while the upward flow of water into the atmosphere is affected by many atmospheric and vegetative processes (Bonan, 2016). Even if the amount of water vapor increases to keep pace with temperature, higher temperatures lead to

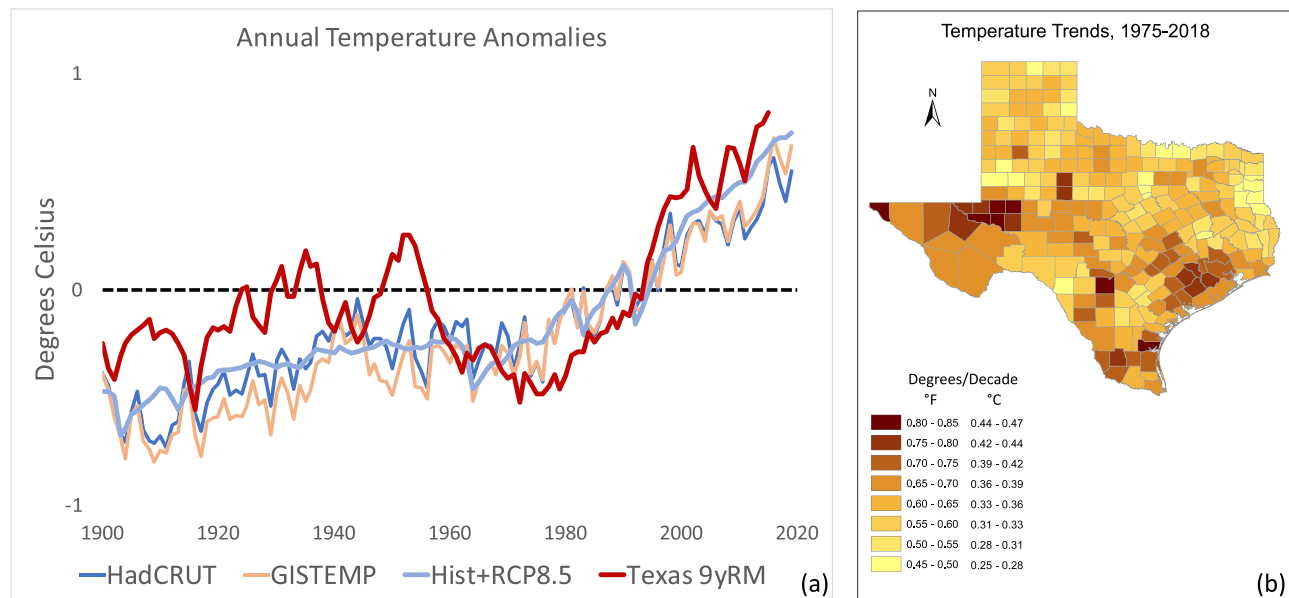


Figure 1. (a) Annual air temperature anomalies in Texas compared to observed and simulated average global temperature anomalies. Anomalies are relative to a 1980–1999 baseline. Global analyses are HadCRUT4 (Morice et al., 2012) and GISTEMP (Hansen et al., 2010). Texas temperature anomalies are from nClimDiv data (Vose et al., 2014). CMIP5 ensemble mean simulations (one ensemble member for each model) include historic runs to 2005 and RCP 8.5 runs thereafter, obtained from the Royal Netherlands Meteorological Institute (KNMI) Climate Explorer (www.climexp.knmi.nl). (b) Map of decadal rate of change of annual average temperature between 1975 and 2018 for each county, according to ordinary least squares regression on nClimDiv data.

greater evaporation rates (Penman, 1948). Transpiration from plants is also increased, although plants can regulate their transpiration. Increased CO₂ levels allow plants to keep their stomata less open, leading to slower water loss, which may temper soil moisture losses (Lemordant et al., 2018; Sellers et al., 1996; Swann et al., 2016). Combined changes in CO₂, temperature, and rainfall also lead to changes in biomass and plant species distribution, which in turn can affect soil moisture (Tietjen et al., 2016).

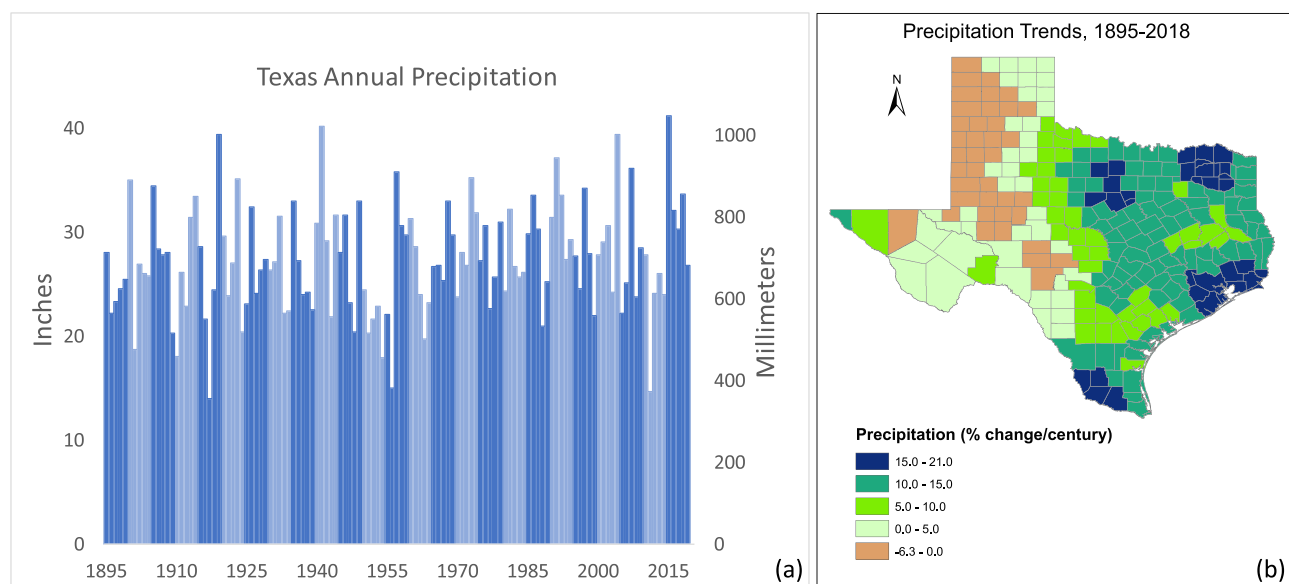


Figure 2. (a) Average annual rainfall in Texas from 1895 to present, according to nClimDiv data (Vose et al., 2014). (b) Map of annual precipitation trend (% change per century) according to ordinary least squares regression for the period 1895–2019, using nClimDiv data.

This complicated interplay of moisture parameters makes it difficult to develop a universal drought metric and requires contextual characterization of drought conditions. Agricultural drought, for example, is ultimately a matter of major root zone soil moisture deficiencies that adversely affect agricultural production (Wilhite & Glantz, 1985). This contextual characterization is a description of soil moisture and is insensitive to whether or not insufficient rainfall can be supplemented by irrigation. Hydrological drought, on the other hand, involves weather-driven reductions in streamflow and reservoir storage that adversely affect human water supply and ecosystems (Wilhite & Glantz, 1985). Some processes favor drought of both types, while others favor one over the other. Without changes in variability, for example, reduced rainfall lowers both soil moisture and runoff. But increased rainfall variability can lead to widespread increases in soil moisture deficits even if overall runoff becomes greater (Dai et al., 2018).

These complex interactions have inspired a variety of drought indices. The Palmer Drought Severity Index (PDSI; Palmer, 1965) is widely employed in observational, modeling, and paleoclimate studies (Cook et al., 2010, 2015; Williams et al., 2015). The PDSI is a commonly used drought index in part because it is sensitive to fluctuations in precipitation that are rapid enough to cause agricultural drought and can be long-lasting enough to cause hydrologic drought. However, the PDSI in an individual season is not necessarily representative of annual average conditions. Springtime snapshots of PDSI are relevant to plants that have a limited growth season, but long-term water supply in large basins is often dependent on a few irregularly occurring large runoff rain events that might occur any time of year or even skip a year. While tree ring growth is sensitive to soil moisture and (sometimes) streamflow, it cannot identify the occurrence of individual rainfall events that produce the greatest amount of runoff and reservoir resupply.

Also, while the PDSI incorporates temperature, it does so crudely, and different implementations differ in their sensitivity to rising temperatures. A more comprehensive measure of agricultural drought is made through quantifying soil moisture deficit (Keyantash & Dracup, 2002). Ultimately, for agricultural drought, a model of plant response to moisture conditions is desirable because it addresses the phenomenon at the core of agricultural drought. Likewise, hydrological drought severity is best evaluated using variables such as streamflow and reservoir storage.

2.4. Drought Projections

Temperature is expected to continue increasing in Texas at or greater than the global mean rate of increase, particularly during droughts (Chiang et al., 2018), although the sensitivity of drought to long-term temperature change is a matter of considerable uncertainty (Mukherjee et al., 2018). Precipitation intensity is also projected to continue increasing, as a warmer Gulf of Mexico provides more water to the lower atmosphere. Individual models disagree on the sign and spatial gradient of the overall climate-driven precipitation change (Easterling et al., 2017; Jiang & Yang, 2012; Maloney et al., 2014), with a general tendency toward less precipitation in the future. There is more consensus regarding summertime rainfall, with climate models consistently projecting less precipitation in the future due to processes known to be important in driving present-day summertime drought in Texas (Bukovsky et al., 2017; Ryu & Hayhoe, 2017). Ventakaraman et al. (2016) have found increasing drought frequency and severity toward the latter half of the 21st century specific to Texas in CMIP5 ensemble mean projections.

Cook et al. (2015) compared drought as reconstructed over the last millennium by the North American Drought Atlas to drought conditions projected under higher (RCP 8.5, Representative Concentration Pathway; van Vuuren et al., 2011; see Hayhoe et al., 2017, for more information on scenarios and models) and lower (RCP 4.5) carbon emission scenarios. Cook et al. (2015) found that projected drought conditions are unprecedented over the past 1,000 years in almost all CMIP5 global climate models (GCMs) analyzed under RCP 8.5 and in a majority under RCP 4.5 in both the Central Plains and southwestern United States. A significant portion of the present-day multidecadal drought in the southwestern United States is already being driven by increased temperatures (Williams et al., 2020).

Following Cook et al.'s (2015) analysis of the Central Plains, we present RCP 8.5 projections for West Texas and East Texas, with the division along the 100th meridian as discussed above (supporting information Figure S1). Details of the analysis are discussed in the supporting information. For both West and East Texas, most models and indicators show significant shifts toward drier conditions by the latter half of the 21st century (Figures 3, S3, and S4), consistent with broader midlatitude trends (Douville &

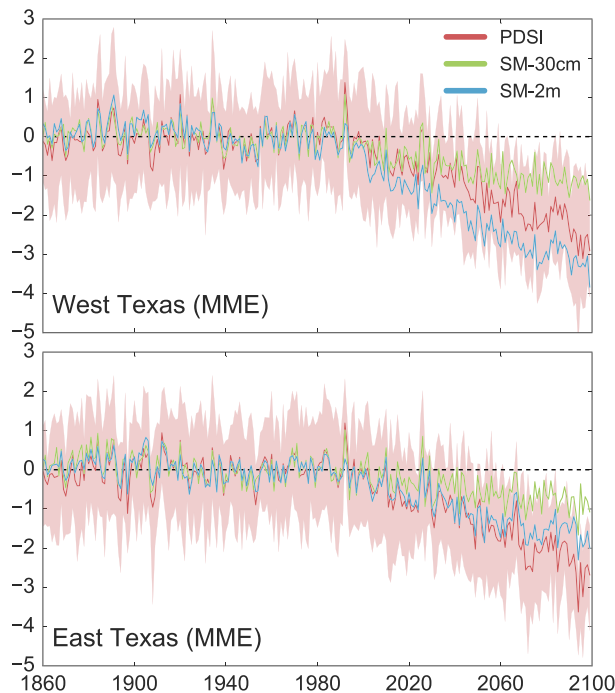


Figure 3. Multimodel ensemble simulations of historic and future projected (RCP 8.5) standardized Palmer Drought Severity Index (PDSI) and standardized soil moisture (SM) anomalies at 30-cm and 2-m depth for West Texas (top) and East Texas (bottom).

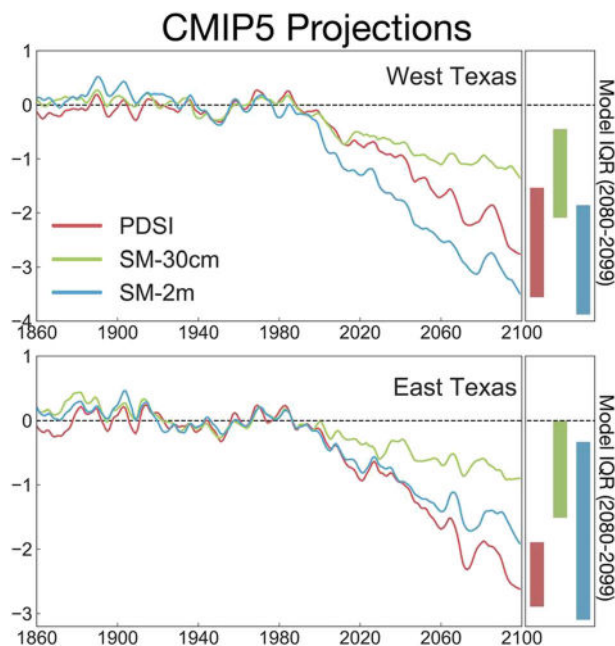


Figure 4. (left panels) Ten-year smoothed (lowess filter) ensemble average time series of regional PDSI and standardized soil moisture from the CMIP5 historical + RCP 8.5 simulations (1860–2099). (right panels) Interquartile range (IQR) across the model ensemble of multidecadal average PDSI and standardized soil moisture for the end of the 21st century (2080–2099).

Plazzotta, 2017). This drying occurs from the combined influence of declining precipitation and increased evaporative demand from a warmer atmosphere (e.g., Cook et al., 2014). Within most models, the sign and relative significance of change is similar across the three indicators, though there is substantial model spread (Figure 4).

The multimodel average values of all three indicators are significantly drier by the latter half of the 21st century (Figure 3), and this is also reflected in the probability distributions calculated from pooling all years across all models in the multimodel ensemble (Figure S5). The least drying under RCP 8.5 occurs in the near-surface SM-30cm soil moisture. Median PDSI is also negative, while drying in SM-2m is more severe in West Texas than East Texas. To provide some perspective, these results indicate that even for the most optimistic case (SM-30cm), *median* conditions during the latter half of the 21st century in both regions will approach the intensity of a moderate twentieth century drought event. In all cases, the multimodel ensemble suggests drier conditions during the latter half of the 21st century than even the most arid centuries that were characterized by megadroughts (1,100–1,300) (Figure S6).

Differences in projected drought severity between the soil moisture indicators shown in Figure 3 are likely due to several factors. CO₂-induced increases in vegetation water use efficiency (Milly & Dunne, 2016; Morison, 1985) affect climate models' soil moisture but are not included in PDSI (Swann et al., 2016), and they are affected differently by atmospheric drying (Ficklin & Novick, 2017). The greater intensity of relative drying in SM-2m versus SM-30cm is reversed when absolute moisture changes, rather than relative moisture changes, are considered (e.g., Berg et al., 2017), since deeper soils have less interannual moisture variability. The precipitation declines in the CMIP5 models in Texas are stronger in winter toward the southwest and stronger in summer toward the northeast (Berg et al., 2017; Easterling et al., 2017), with wintertime precipitation having greater opportunity to soak deeply and persist in the larger SM-2m soil moisture pool. Ultimately, these differences across soil moisture and the PDSI make drought projections sensitive to the specific drought metric used, with no single metric being best for all applications. Furthermore, none of those metrics discussed above are designed to identify changes in streamflow, groundwater recharge, or reservoir storage.

Regardless of differences between indicators and across models, the drying of summer-season soil moisture appears as a remarkably robust response in climate change projections for Texas. This includes broad coherence across various drought indicators and a largely consistent response across models in the ensemble. Further, this points to a fundamental shift in soil moisture for the region to a drier state comparable to, or even exceeding, the driest centuries of the last 1,000 years. The consequences for vegetation, however, remain an open question (Scheff, 2018; Schwantes et al., 2017; Swann, 2018).

3. Translation of Climate Data to Stakeholder-Relevant Parameters

Healthy ecosystems, rapidly growing municipalities, and energy and agricultural production are key factors for sustaining population and

economic growth within Texas. The availability of fresh water is key to these activities, and this availability is likely to be affected by the impact of climate change on both drought and extreme precipitation events and associated storms. The worst single year of drought across the state occurred in 2011. This event left the state with 7.6 billion dollars in agricultural and livestock losses, 301 million dead trees (6.2% mortality statewide; Moore et al., 2016), and many dried-up lakes and rivers (Nielsen-Gammon, 2012). Combining climate change with the projected population growth discussed above, it is likely that Texans will face unprecedented challenges to the resilience of their water supply that depend on whether a given location depends primarily on surface water or groundwater.

3.1. Potential Changes in the Texas Water Budget

Texas contains 15 major river basins, most of which reside solely within the state. Most of these rivers meander from the arid northwest to the wetter southeast to the Gulf of Mexico. Physics-based distributed hydrologic models are commonly used to reconstruct long-term historical records at a large scale (Nijssen et al., 2001; Zhang et al., 2014). The quality of the product depends on how well the model can be calibrated and validated. Products over the United States generally have not shown good performance within most Texas river basins (Livneh et al., 2013; Maurer et al., 2002; Oubeidillah et al., 2014; Samady, 2017; Witham, 2015). The Variable Infiltration Capacity (VIC) model (Liang et al., 1994) was recently calibrated and validated against observed streamflow over 10 major Texas river basins (Lee et al., 2017). The simulated soil moisture was also evaluated using observations from the North American Soil Moisture Database. Driven by gridded meteorological forcings obtained from Livneh et al. (2013), the hydrologic data set includes daily values for a complete set of water and energy budget terms (e.g., precipitation, evapotranspiration, soil moisture at three layers, surface runoff, baseflow, latent heat, and sensible heat) at 1/8th-degree resolution from 1918 to 2011. The potential benefits of this data set toward future planning of Texas water resources are twofold. First, the calibrated model can be forced with future climate outputs from GCMs to project water and energy budget terms under various emission scenarios. Second, the long-term hydrologic record can provide a point of reference for model projections and enable process-based understanding of changes in water availability.

To make the modeled future hydroclimatological results relevant to decision making, thorough uncertainty quantification is imperative. The uncertainties associated with these hydrologic projections are primarily from five sources: RCP scenarios, GCMs, downscaling methods that infer future local weather conditions from broader-scale simulated trends, hydrologic models, and natural variability. The different RCPs lead to very different outputs (IPCC, 2013; Jones et al., 2013). Because of their coarse resolutions and different physical/computational algorithms, GCMs simulate different climate outcomes under the same scenarios (Barnett et al., 2006; Giorgi & Mearns, 1991; Teng et al., 2012). Before applying hydrologic models, the GCM outputs first need to be downscaled, which means that the outputs need to be converted to data with much higher spatial resolution (Wood et al., 2004). Both statistical downscaling and dynamic downscaling are commonly used. Statistical approaches, which rely on historical relationships between large-scale and local conditions, are computationally efficient, while dynamic downscaling methods require substantial computing resources. Dynamical downscaling uses regional-scale climate models to more directly simulate the relevant physical processes, often with statistical downscaling of the regional-scale model output. Hydrologic modeling uncertainties are attributable to uncertainties in forcing inputs and model setup (e.g., structure and parameters). Natural variability means that actual conditions will differ year to year from even a perfect climate simulation.

To translate climate and hydroclimate projections into information relevant to water management, each of these uncertainty sources needs to be assessed (for each river basin) and communicated to the stakeholder in an effective manner (Cartier, 2019; Harrison et al., 2013). Even if all sources of uncertainty are clearly communicated, the degree of uncertainty in current hydroclimatological results may limit their usefulness in many cases. But water management decisions are always made in a climate of uncertainty, so it is even more crucial in a changing climate to emphasize the importance of robust, no-regrets solutions and adaptive management that allows for new information to be periodically incorporated.

3.2. Adapting Reservoir Management to a Changing Climate

Reservoirs in Texas are essential for providing water supply and for mitigating floods. Texas used about 5.9×10^6 acre-feet of reservoir water in 2017, which accounted for approximately 43% of total use in 2017

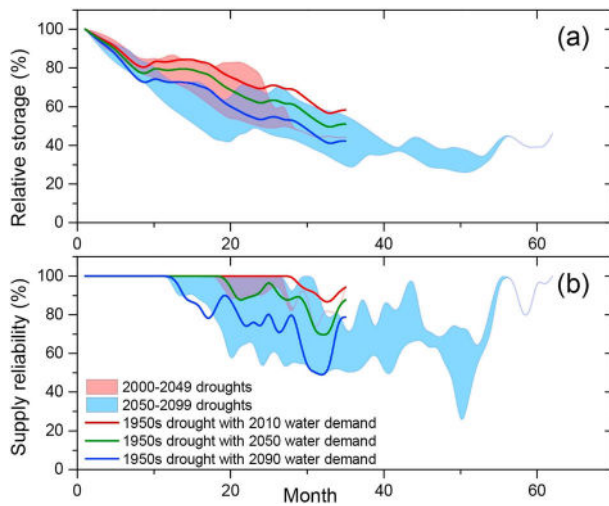


Figure 5. Responses of (a) relative storage and (b) water supply reliability to simulated CMIP5 hypothetical future drought events (with the corresponding water demand) and the 1950s drought (with the 2010, 2050, and 2090 water demand). Storage and water supply are the summation of seven reservoirs in the Dallas-Fort Worth area. From Zhao et al. (2018), copyright Elsevier (2018).

(TWBD, 2019). Across the Brazos and Colorado river (Texas' Colorado River, not the one that drains the southwestern United States) basins of West Texas, Dawson et al. (2015) find that reservoir inflow and storage has generally decreased, eutrophication generally increased, and water temperature has generally increased. These trends appear to reflect a combination of local human influence, changes in local hydrology, and long-term climate trends (Dawson et al., 2015; Gelca et al., 2015).

A warmer climate with more variable precipitation poses an unprecedented challenge for reservoir managers supporting the growing population and economy. Various studies use the output from climate model projections as input to hydrological models to investigate climate change impacts on water quality and supply (Milly et al., 2005; Haddeland et al., 2014; in Texas, Gelca et al., 2015). The reservoir schemes in such models are typically simplified for use at a large scale (e.g., continental or global). To produce informative results suitable for local management, the reservoir modules in such hydrological models should be able to represent the real, predefined, complex operational rules, such as when and how rapidly water is released from the flood pool. To close this gap, Zhao et al. (2016) implemented a multipurpose reservoir module into the Distributed Hydrology Soil Vegetation Model (DHSVM; Wigmosta et al., 1994) and tested it for Lake Whitney (one of the largest reservoirs in

Texas). Results suggest that the ability to provide water during drought conditions is especially sensitive to rules for floodwater storage, which means this modeling tool can be used to evaluate different flow regulation options. Developing such options will help promote water resilience under future environmental changes. Aside from changes in water storage, Gelca et al. (2015) found that climate change would likely increase water temperatures, specific conductance, and levels of sulfate and chloride while decreasing dissolved oxygen levels and pH, many of which would affect the quality of water available for human consumption and recreation.

Knowledge about future reservoir storage, and the associated uncertainties—both for individual reservoirs and for a system at basin scale—is prerequisite for effective planning. Zhao et al. (2018) modeled the surface water supply for Dallas as an example to demonstrate this concept. First, the DHSVM model (with its reservoir module) was calibrated and validated over the historical period. Then, the model was driven by eight downscaled CMIP5 GCM outputs (Reclamation, 2013), which were chosen for the quality of their simulations of past drought variability in the region, as measured by PDSI. The simulations project that the Dallas area will be more prone to drought events—especially during the second half of the 21st century. This result is consistent with those of the region-wide simulations (section 2.4). The DHSVM was then driven by each GCM's most severe drought from each of the two periods (2000–2049 and 2050–2099), using population projections to estimate water demand for the corresponding drought years. The simulations of reservoir storage show substantial impacts from both population growth and climate change (Figure 5). During the first half century, most of the simulated future droughts have a shorter duration and a smaller impact on the supply reliability than the 1950s drought under the 2050 population projection. During the second half century, each of the simulated future droughts leads to greater reservoir depletion than the 1950s drought, and some would be worse even without differences in population. For Dallas, which depends solely on surface water supply, this is a crucial water supply challenge. Further research to evaluate the water resilience of multireservoir systems (and alternative solutions, such as adjusting reservoir operation rules and/or constructing new reservoirs) is required to help address such challenges.

Although not the subject of this paper, the impacts of climate change on reservoir operators go well beyond changes in water supply. For example, historic and projected increases in heavy rain events may alter the safety margins of existing dams and require retrofitting or reduced conservation pool size (Mallakpour et al., 2019).

3.3. Groundwater Resilience

The Texas Water Development Board recognizes nine major aquifers and 22 minor aquifers in the state. Major aquifers are highly productive over large areas, whereas minor aquifers are either highly productive

over a small area or moderately productive over a large area (George et al., 2011). These aquifers range from unconsolidated sands and gravels, to sandstones, to karst limestones. In general, the eastern half of the state has artesian aquifers, while the western half of the state has unconsolidated and/or unconfined (nonartesian) aquifers.

Groundwater is connected to hydrologic systems through recharge, cross-formational flow to and from other groundwater systems, and natural discharge to seeps and springs. Recharge rates are directly tied to the volume, timing, and intensity of precipitation and are also affected by soil types and soil profiles, vegetation, temperature, and the underlying geologic units between soil and the water table. Groundwater is most directly connected to human systems through extraction from wells. Longer-term human influences on groundwater include surface water management, managed aquifer storage (using aquifers to store water from other sources), and human influence on climate.

Humans may also impact recharge through land use. For example, recharge rates have been observed to be higher in fallow fields than in actively cropped fields (Chen et al., 2018; Scanlon et al., 2007). In urbanized landscapes, where increased impervious cover ought to reduce infiltration and recharge, landscape irrigation and leaking water and wastewater infrastructure commonly result in a net increase in recharge (Christian et al., 2011; Sharp et al., 2003). The impacts of land use on recharge may rival those of climate change, and the impact of these two factors may be synergistic.

Because deep, infiltrating water must flow from below the root zone to the water table, there is often a delay between changes in surface conditions and changes in recharge that can range from nearly instantaneous in some karst settings (Wong et al., 2012) to hundreds and even thousands of years (McMahon et al., 2011). Furthermore, due to the variability in recharge rates across an aquifer, water entering an aquifer today may consist of rainwater that fell decades to centuries ago during a range of climatic conditions. In this way, many groundwater systems are somewhat buffered against recent changes in climate.

Groundwater pumping ties directly to water demand, which in turn can depend on population, land use, economics, water use efficiency, climate, and weather. Drier and hotter conditions result in greater water demands for agricultural and urban irrigation as well as steam-electric power (driven by higher cooling needs). Groundwater pumping may reduce seeps and springs, thus affecting surface water resources. Deleterious climate effects on surface water resources may increase reliance on groundwater, thus further impacting groundwater resources and surface water/groundwater interaction. Aquifer yield is also affected by groundwater management, which in turn may also be impacted by climatic changes, especially if those aquifers are being managed sustainably (Gleeson et al., 2011).

3.4. Quantifying Future Climate Change Effects on Groundwater

Climate change can affect groundwater recharge by altering temperature, evaporation, rainfall amounts, intensity, and runoff. Impacts will vary depending on the characteristics of the aquifer and the landscape; Mace and Wade (2008) concluded that key factors include how quickly an aquifer recharges, the geologic setting, and land and water use. They noted that groundwater resources with high recharge rates, such as karst aquifers like the Edwards (Balcones Fault Zone) Aquifer and highly permeable clastic aquifers like the Lipan Aquifer, are more susceptible to shorter-term changes in climate, whereas others with much slower recharge rates would still be affected but would not show effects for decades if not centuries. They also noted that artesian groundwater resources in clastic aquifers—such as the Trinity Aquifer north of the Colorado River, the Carrizo-Wilcox Aquifer, and the Gulf Coast Aquifer—are unlikely to be affected by climate change as long as the rate of flow of water moving into the artesian zone (effective recharge) remains less than the total recharge rate. For Texas aquifers in general, though, one projection by Yoon et al. (2018) shows a general decline in groundwater recharge rates.

The Edwards (Balcones Fault Zone) Aquifer is one of the most vulnerable aquifers to climate change impacts in the United States, because of its shallow depth and high karst permeability that make for rapid surface-subsurface connections (Kloesel et al., 2018; Loáiciga et al., 1996, 2000; Wong et al., 2012). Chen et al. (2001) investigated the possible effects of climate change on the Edwards Aquifer and projected a 1.5% to 3.5% increase in municipal demand, a 31.3% increase in agricultural irrigation demand, and a 20% to 30% decrease in recharge by 2090. These changes would reduce flow at Comal Springs, the largest spring system in the southwestern United States, by 10–16% by 2030 and 20–24% by 2090, and produce

regional welfare losses of \$2.2–6.8 million per year. Avoiding stress to endangered species by preventing flows at Comal Springs from going lower than 3 m³/s would require reducing the maximum amount of pumping in the San Antonio Segment of the Edwards (Balcones Fault Zone) Aquifer from 608,000 to 473,000 m³/day (Mace & Wade, 2008). Mace and Wade (2008) argued that sea-level rise will not significantly affect groundwater resources in the Gulf Coast Aquifer over the next century because most groundwater is extracted from deeper parts of the aquifer that have confining layers between them and the land surface/gulf. Uddameri et al. (2014) also found that regional-scale sea-level rise over the Gulf Coast Aquifer would have limited impact on saltwater intrusion due to the flux of freshwater through the aquifer, at least in the Corpus Christi area, with withdrawal rates being a key factor in limiting or exacerbating such impacts.

It is clear that additional research is needed for specific aquifers to constrain the residence time of water moving from the land surface to the water table and how drought will affect freshwater flux. Greater priority should be placed on the more responsive aquifers that will exhibit climate change impacts sooner. These include the Blaine, Bone Spring-Victorio Peak, Capitan Reef Complex, Edwards (Balcones Fault Zone), Edwards-Trinity (Plateau), Ellenburger-San Saba, Hueco-Mesilla Bolsons, Igneous, Lipan, Marathon, Marble Falls, Seymour, and Trinity (south of the Colorado River) aquifers. Rainfall-runoff relationships under a warming climate should also be assessed for aquifers such as the Edwards (Balcones Fault Zone) Aquifer where a contributing zone funnels runoff to recharge features.

3.5. Adapting Groundwater Management to a Changing Climate

Groundwater in Texas is either managed by groundwater conservation districts or by rights holders withdrawing water. Groundwater conservation districts were founded to work collectively over a groundwater management area, such as a portion of a major aquifer, to establish a “desired future condition” (e.g., future water levels in that portion of an aquifer). This provides goals for managing groundwater resources in the district's area. The districts then pass and enforce rules to achieve that condition, through spacing of and restrictions on pumping. The Texas Water Development Board estimates how much can be pumped to achieve the desired future condition, a number called the modeled available groundwater. In areas without groundwater conservation districts, landowners can pump as much as they want, as long as water is not extracted for the purpose of harming other aquifer users and does not cause land subsidence.

Adapting groundwater management to climate change depends on how climate change impacts a particular aquifer. Changes in groundwater demand may be the most important climate-induced change for aquifers with very low recharge rates. In these cases, the modeled available groundwater would not change: Pumping is pumping, regardless of what affects it. However, unanticipated increased demand by existing water users may create political stress.

In aquifers where climate change induced impacts to recharge become apparent over the next few decades, the modeled available groundwater may need to be reevaluated. Desired future conditions are established for approximately 50 years into the future, a time horizon long enough for systematic changes to climate to impact groundwater in many Texas aquifers. Groundwater conservation districts can consider the effects of climate change, including using as a worst-case scenario a drought longer and more severe than that of the 1950s, when developing desired future conditions if they so choose, although they have not yet done so.

There are probably several reasons why groundwater conservation districts do not consider climate change. One reason is that the establishment of desired future conditions as defined by state law does not require the consideration of climate change. Another reason is that climate change has become a political issue, and almost all of the districts regulate rural areas, which tend to be more politically conservative than urban areas. Ideally, a desired future condition is independent of the climate; however, many districts optimize their desired future condition to existing and planned pumping. By not considering the effects of climate change on recharge and groundwater demands, these districts may find their desired future conditions more restrictive than they anticipated.

Groundwater systems can be used conjunctively with other sources of water to expand water resources. For example, surface water can be treated, injected, and stored in an appropriate aquifer for later use without evaporative losses. In rapidly recharging aquifers, recharge can be enhanced by directing excess surface water or treated wastewater into infiltration basins or recharge features. There may be unintended

consequences that need to be weighed, however, such as less water for downstream users and the environment, and a reduction in water quality.

4. Alignment of Climate Science Research With Stakeholder Needs

The preceding sections discuss what is known about observed and future climate trends and their impacts on Texas water resources. This section discusses the knowledge that water users, managers, and planners need in order to appropriately incorporate climate change information into their operations. It is organized around the perspectives of four sets of stakeholders—agricultural producers, large surface water suppliers, small groundwater planning districts, and regional water planning districts. These are designed as representative examples and not intended to be comprehensive. Other stakeholders and sectors in Texas, such as power generation, oil and gas exploration, wildlife management, and manufacturing, have future water information needs that are similarly specific and difficult to satisfy with generic climate change information. For example, major industrial water users need to ensure the reliability of their water supply with future climate change, and climate change information alone does not elucidate how suppliers will adapt capacity, how other users will adjust water demands, or how likely a particular supply will drop below a particular level (e.g., Reddy et al., 2015).

In each case, actionable, incompatible, and unavailable climate science information is identified from the perspective of the stakeholder. *Actionable information* is information that can be directly or easily used in decision making. *Incompatible information* is information that is available and has the potential to aid decision making but cannot be used without additional, and often substantial, expert input. These are similar to the usable and useful information categories of Lemos et al. (2012). *Unavailable information* is information that is necessary for full consideration of climate change but which is not available and may not be obtainable under the present state of science and technology.

4.1. Case 1: Agricultural Producers

Climate information is most directly relevant to agricultural producers in the form of probabilistic seasonal outlooks. Decisions such as the appropriate crops to plant (and when to plant them) and herd stocking sizes depend on expectations for the coming seasons.

Texas' significant interannual weather and climate variability demonstrates the need for actionable seasonal forecasts. Various specific decisions with particular lead times are made during certain times of the year (Klemm & McPherson, 2018; Mase & Prokopy, 2014). Particularly valuable for agricultural producers would be actionable forecast guidance that is available in fall and winter for conditions in the following warm season. Unfortunately, the influence of predictable oceanic features such as El Niño–Southern Oscillation is relatively low during the warm season, limiting the present-day utility of such forecasts. Even during more predictable seasons, forecasts rarely rise above the level of accuracy required for adoption by risk-averse farmers (Garbrecht et al., 2010; Kusunose & Mahmood, 2016).

Information regarding the probabilities of seasonal-mean conditions is less relevant than predictions of the chance of extreme events such as droughts and blizzards. The severity threshold of extreme events can be both crop and location specific, requiring a method for producers to translate seasonal forecasts into measures of comparative risk. Producers, however, will not necessarily be able to translate their agricultural threshold event parameters into meteorological terms. As seasonal forecasts become more skillful, there is a growing opportunity for the private sector to translate those forecasts into actionable information for producers, such as the likelihood that rainfall over the next 3 weeks will ruin a mature cotton crop (Klemm & McPherson, 2017).

Climate change information is relevant on a year-to-year basis because producers often rely on experience with past climatological events when planning, such as selecting which crops to plant. In that context, it is important for producers to know whether unusual events in the recent past represent an anomaly or the realization of a long-term trend. The answer will need to be specific to the type of events that have the greatest impact on local operations, such as available soil moisture during planting season or precipitation during the growing season. Since producers are aware of past impactful climate events, this guidance can usefully be framed in the context of past trends, and the extent to which past events and their frequency

are representative of future events and their frequency. For example, the observed impact of a past drought can be projected for a future event of similar magnitude and duration.

Climate change information can inform longer-term planning decisions such as which crops to grow, which breeds to invest in, when to buy or sell land, or even which type of operation to run. General guidance is available from projections of temperature, precipitation, and other such parameters (Awal et al., 2016; Modala et al., 2017), but the most valuable information would be location-specific projections of size and variability of crop yields, given projected changes in climate means and variability and confounding factors such as insects (Deutsch et al., 2018; Steiner et al., 2017). Existing Texas projections for crop yields (Adhikari et al., 2016; Chen et al., 2019; Kothari et al., 2020) and irrigation requirements (Awal et al., 2018; Fares et al., 2017) typically consider only subset of important factors and adaptation responses, making interpretation by agriculture stakeholders challenging.

4.2. Case 2: Large Surface Water Suppliers

Surface water suppliers typically make long-term infrastructure planning decisions based on a single deterministic target. The most common target is firm yield, which is the amount of water that can be reliably delivered during an extreme drought. In Texas, the extreme drought that is used for planning purposes is the “drought of record” as discussed above. Until recently, that drought was the drought of the 1950s. For some basins, however, such as the Lower Colorado River Basin, the drought of the 2010s will be the new drought of record. Regardless of the specific impact of climate change on future droughts, future climate change will alter the relevance of the historical drought of record to future water supply reliability.

Suppose, for illustration, that the drought of record is known to be the worst in 100 years. In a stationary climate, a worse drought would have roughly a 40% probability of occurring within the standard planning horizon of 50 years. To maintain the same resiliency for planning purposes in a changing climate, a planner would need to know the firm yield during a drought with a 40% probability of occurring within the next 50 years given the changing climate. Since planning is done decade by decade, decadal estimates of firm yield during a drought with, say, one in 10 chances of occurring within a given decade would be useful, as well as similar decadal projections beyond the 50-year window.

There are two challenges to providing those estimates. The first involves the meaning of the probabilities themselves, and the second involves the estimation of future firm yield. Individual probability estimates from historical data reflect the partially random nature of actual weather and climate events. Even given the same historical data, different techniques for estimating probabilities can produce different values. This source of error is called structural uncertainty (Ajami et al., 2007). Structural uncertainty does not exist for the drought of record, since it is an actual event. Indeed, the current planning process is directed toward a single target without explicit uncertainty, so any incorporation of probabilistic information would represent a fundamental change in the planning approach. There is structural uncertainty, for example, in estimating the recurrence frequency, with the estimate given above being one crude way of doing so.

The future climate is not known, so—as discussed previously—there is additional uncertainty inherent in future firm yield projections. These uncertainties arise from future carbon emission scenarios and other climate drivers, different possible magnitudes and rates of response of the global climate system to these drivers, and different possible consequences to particular water suppliers from a given change in global climate. Should these uncertainties be folded into decadal drought severity probabilities, or should a single “best guess” scenario, climate response, and local impact estimate be used to inform future water planning? Neither the probability distribution of actual scenario uncertainty nor the single “best guess” can be fully quantified, and the IPCC AR5 refrained from providing sufficient quantitative information on expert judgment of climate sensitivity to fully characterize the probabilities or even specify a “best guess” (IPCC, 2013). Confronted with these uncertainties, some water suppliers, such as Denver Water, have found it appropriate to plan for multiple scenarios rather than a specific climate projection (NASEM, 2019). Past state water plans in Texas considered multiple scenarios for population and water demand projections, but not for uncertainty in water supplies (TWDB, 1984, 1990, 1997); water plans since 1997 have been based on single scenarios.

Obtaining any estimate of future yield is challenging, let alone developing a probability distribution that includes structural uncertainties. The information needed is time-dependent inputs to models such as the water availability model (WAM) (Wurbs, 2005) that were not originally designed for a nonstationary

climate. Appropriate inputs are unavailable from GCMs, so watershed-specific downscaling or other methods of generating detailed future scenarios are needed. Statistical downscaling techniques assume that the relationship between larger-scale weather or climate conditions and precipitation and runoff remains constant, but there is little guidance on the reliability of those assumptions for water supply purposes. In a changing climate, the aspects of precipitation that will possibly change are its total amount, seasonality, temporal and spatial granularity, and intensity. Other environmental factors related to the water cycle will also change, such as temperature-driven evaporation rates, the response in soil moisture to changes in precipitation, atmospheric carbon dioxide, and the migration and water use efficiency of plant species. Projections need to either incorporate all such factors or demonstrate that excluded factors are unimportant. So, for water suppliers, not only is the task of developing WAM inputs from climate projections difficult but so is the task of identifying the appropriate (set of) projections and including them in a process that assumes a single event. Only the largest suppliers have the capacity to undertake such an effort on their own and to deviate from standard single-scenario planning.

4.3. Case 3: Small Groundwater Management Districts

As discussed above, there can be a lag of years to decades and more in the response of groundwater to climate impacts, depending on the characteristics of the aquifer and the region. Instead, the impact of climate on demand or human response may be the most important short-term factor. Thus, quantifying climate change impacts on water demand involves not just the types of obstacles identified on the supply side in case 2 but also the challenge of predicting the response of human actors to the physical impacts of climate change. For example, how willingly and rapidly will people move to more water efficient practices, such as switching to less water-intensive crops or landscaping? Without addressing such questions, projections of change in evaporation and rainfall only produce a partial bound on the change in water demand.

A challenge shared by small groundwater districts and small surface water suppliers is the relative lack of in-house technical expertise on the science of climate change. Without such trusted expertise, managers must formulate their own opinions regarding climate change or be more likely to reflect the opinions of their customers. The value of qualitative climate change information, such as projections of temperature, precipitation, and drought severity, depends on large measure on whether a water manager would be able or even willing to use them. Given the existence of skepticism regarding climate change, adoption of climate change information can be limited by the extent to which a nonexpert can recognize that the projections are well founded and unbiased. Satisfying this requirement involves both perception and reality; the mere existence and availability of well-founded and unbiased projections are insufficient.

There are various ways that well-founded and unbiased projections can come to be perceived as such. One is to relate the projections to historical information. If it can be demonstrated, through analysis of observations or through modeling, that the future projected conditions predominantly represent a continuation of an ongoing trend, those projections become more plausible. Second, it is important to remember that groundwater managers, like surface water suppliers and agricultural producers, need both short- and long-term climate information. If seasonal forecasts become more reliable and can be tailored to the key needs of water managers, confidence may build in the ability to provide reliable (or at least unbiased) longer-term projections. One shortcoming of this approach is that, until recently, the techniques for climate change projections and seasonal forecasts had very little overlap, so credibility on one endeavor did not imply credibility in the other. That gap is closing with the growing use of coupled climate model outputs as resources for seasonal forecasters (Slater et al., 2016).

4.4. Case 4: Regional Water Planning Groups

The state planning process starts with regional plans developed for 16 regional water planning areas that cover the state. The Regional Water Planning Groups charged with planning for these areas must deal with all the issues discussed in the other three cases, except that they are usually not involved in short-term operation decisions. In addition, they must deal with water supplies as a collection of semiautonomous, interdependent systems. Climate impacts in one portion of one system can propagate through the other systems in unexpected ways. One example is the effect of rising temperatures driving increased energy demand since Texas uses slightly more energy to cool than to heat (Zhou et al., 2014). Rising energy demand means increased need for cooling water for conventional power plants, and this, in turn, can lead to conflicts

between power suppliers and other water users. Another set of issues on the supply side is the effect of climate change on renewable power generation. How will solar photovoltaic cell efficiency be affected by changes in cloud cover? How will long-term wind speed changes affect the viability, efficiency, and optimal spatial distribution of wind turbines?

Given the lack of system-specific, quantitative climate change information, a reasonable approach for a water planning area would be to develop multiple water supply sources that respond to droughts and climate change in different ways, or to develop water supply sources that are insensitive to climate change. One difficulty with that approach is that there is often limited capacity to develop new supply sources. Another difficulty to building resiliency of water supplies is that resiliency implies sources greater than any immediate need, and it can be difficult to obtain permits for projects that apparently are not serving an immediate need.

With regional water planning groups serving a diverse range of stakeholders, challenges of incorporating climate change information are magnified. With no established framework for incorporating climate change information, such groups must have the technical expertise and institutional capacity to develop their own frameworks. They also need the ability to convince their stakeholders not only that considering climate change is appropriate but that their chosen approach is the proper way to do so.

5. Researcher-Stakeholder Alignment Effort: Austin, Texas

The City of Austin's water utility, Austin Water, serves over 1 million customers. The 2011 statewide drought motivated the city to prepare a 100-year integrated water resources plan that considers climate change, known as Water Forward (Austin Water, 2018). Austin Water developed this plan with support from a task force composed of city council-appointed stakeholders from the public and ex officio members representing various city departments. Austin's City Council adopted the Water Forward final plan in November 2018. The plan anticipates 5-year updates to address adaptive management. Two of us were involved in plan development, one with the City of Austin (M. F. G.) and one as a source of climate change information (R. H.).

GCMs formed the basis of Water Forward's consideration of climate change. A total of 20 GCMs were run through the year 2100 using the expected warming effects of different future scenarios (Hayhoe et al., 2016). The outputs of the GCMs were converted into local estimates of future precipitation and temperature at pertinent stream gages and reservoir sites across the Colorado River Basin, in which Austin is located. These local weather variables were used to derive sets of stochastic future streamflow conditions based on the historical relationships of streamflow and weather. The 20 GCM-derived streamflow sequences at each stream gage were used as an ensemble forecast to describe a range of possible future hydrologic conditions and to adjust the historical record to create future streamflow sequences that range from (1) having an equal chance of occurrence as the drought of record to (2) up to 3 times rarer than the drought of record, in both present and future climate. This provided a set of possible design events in a context understandable to a nonexpert. With an adjusted historical record that reflects possible future hydrology, a basin-wide WAM was used to simulate streamflow and reservoir storage, including water availability for the city.

At the outset, hydrologic modelers and planners outlined the needs for basin-wide streamflow and weather variables at specific locations that coincided with future planning horizons. The basin-wide locations were consistent with historical streamflow and weather inputs used in the water availability modeling tool used for Water Forward. The climate scientists were able to derive the streamflow and weather variables at the local level from the GCM output. Therefore, the information provided by the climate scientists had a high degree of utility in driving local and basin-scale water availability modeling. GCM-derived streamflow and weather was readily converted into a format that could be used as input for local and basin-wide simulations.

The climate change information was generally greeted with acceptance by the stakeholders and public. Several factors may have contributed to the positive view, including clear communication in a layperson's terms from the climate scientist to the stakeholders regarding the status of climate science and the need to plan for future conditions, the unprecedented drought conditions in the early 2010s, and community understanding and acceptance of the science. The clear communication and understanding, in turn, were facilitated by having frequent meetings and communications between the climate scientists and the city staff, rather than a scope of work handed off to the climate scientists and a deliverable produced at the end of the contract period. The process helped raise the level of understanding and confidence for the

nonclimate scientists who were involved in creating the plan. The city staff were better equipped to communicate the climate scientists' work products to their management as well as stakeholders. The stakeholders were also able to benefit from several meetings with the climate scientist present and available to answer questions. The sources of uncertainty in generating climate change information were acknowledged in the planning process including the influence of natural variability, human choices, scientific uncertainty, and uncertainty in translating regional-scale changes in climate into local-scale changes in hydrology. While there were no formal or quantitative measures of uncertainty cited, this did not form an obstacle for proceeding with considering climate change as a fundamental component of Water Forward.

6. Paths Forward

We have examined some of the pressing challenges and near-term opportunities for incorporating climate change projections into improved water resource management strategies. Considerable information on historical and future climate exists, but information, knowledge, and resource gaps preclude direct use of most of this information for water planning purposes, even in a relatively resource-rich location such as Texas. Each location will have its own unique challenges, but identifying those challenges requires a comprehensive examination of stakeholder needs and circumstances. Many challenges exist that are not directly discussed here, such as lack of technical capacity, the lack of established techniques of incorporating climate change information, and challenges associated with obtaining buy-in from diverse customers and political leaders.

By examining informational needs through the lens of four separate stakeholder groups, we identify key areas of research for Texas that will synergistically inform scientists and stakeholders:

1. A coordinated E-W study of Late Pleistocene to Holocene-age moisture proxies to reconstruct past shifts in the position of the "100th meridian" wet-dry transition would yield valuable insight into teleconnections between global climate change, including during abrupt warming events, and local hydrologic extremes that will impact Texas' rapidly growing urban corridors.
2. Bridging the gap between generating downscaled GCM precipitation data and accurately projecting local streamflow and soil moisture is a significant technical challenge that requires collaboration across a range of disciplines, as demonstrated by Austin's Water Forward. Solving this challenge allows engineers and hydrologists to readily adapt the WAM used in Texas to represent future conditions over timescales relevant to stakeholder needs.
3. Not planning for droughts worse than the drought of record is a glaring and long-standing insufficiency in the current state water planning process (Banner et al., 2010), especially since some areas of the state recently experienced a new drought of record. Addressing the question "How much worse should we plan for?" is an opportunity for planners and scientists to collaborate and learn from each other.
4. Direct linkages to data, information sources, and decision-making frameworks, with transparent communication of calculational and structural uncertainties of high-resolution climate projections and associated hydrologic projections, are critical for maximizing the extent to which nonexperts recognize that the projections are well founded and unbiased and thus feel confident making decisions that increase resilience for Texas.

Conflict of Interest

The authors declare no conflicts of interest. Richard Hoffpauir and Tom Gooch serve as consultants to water stakeholders.

Data Availability Statement

All new data analyses presented here were created using publicly available data sets. Figures 1 and 2 are based on data from the nClimDiv data set hosted by the National Centers for Environmental Information (NCEI), accessed online (<ftp://ftp.ncdc.noaa.gov/pub/data/cirs/climdiv/>). Figures 3 and 4 (and figures in the supporting information) are based on data from the North American Drought Atlas data set hosted by NCEI, accessed online (<https://www.ncdc.noaa.gov/paleo-search/study/19119>), and on CMIP5 climate model output hosted by the Earth System Grid Federation and accessible from the Program for Climate Model

Diagnosis and Intercomparison (PCMDI) node (<https://esgf-node.llnl.gov/projects/cmip5/>). A list of specific CMIP5 models used and their sponsoring institutions is included in the supporting information.

Acknowledgments

Nielsen-Gammon, Banner, Wong, and Tremaine were supported in part by the National Science Foundation Coupled Natural and Human Systems program, Grant AGS-1518541, the Cynthia and George Mitchell Foundation Grant G-1809-55892, and by The University of Texas at Austin's Planet Texas 2050 Bridging Barriers research initiative. We thank Katharine Hayhoe, Ron Anderson, and Tim Finley for their insights and contributions to the manuscript. We thank the participants of the CNH project and the Texas Water Research Network for helping to define the problem and identify issues.

References

- Adhikari, P., Ale, S., Bordovsky, J. P., Thorp, K. R., Modala, N. R., Rajan, N., & Barnes, E. M. (2016). Simulating future climate change impacts on seed cotton yield in the Texas High Plains using the CSM-CROPGRO-Cotton model. *Agricultural Water Management*, 164, 317–330. <https://doi.org/10.1016/j.agwat.2015.10.011>
- Ajami, N. K., Duan, Q., & Sorooshian, S. (2007). An integrated hydrologic Bayesian multimodel combination framework: Confronting input, parameter, and model structural uncertainty in hydrologic prediction. *Water Resources Research*, 43, W01403. <https://doi.org/10.1029/2005WR004745>
- Austin Water (2018). Water Forward Integrated Water Resource Plan, Accessed Nov. 3, 2019 at http://austintexas.gov/sites/default/files/files/Water/WaterForward/Water_Foward_Plan_Report_-_A_Water_Plan_for_the_Next_100_Years.pdf
- Awal, R., Bayabil, H. K., & Fares, A. (2016). Analysis of potential future climate and climate extremes in the Brazos Headwaters Basin, Texas. *Watermark*, 8(12), 603. <https://doi.org/10.3390/w8020603>
- Awal, R., Fares, A., & Bayabil, H. (2018). Assessing potential climate change impacts on irrigation requirements of major crops in the Brazos Headwaters Basin, Texas. *Watermark*, 10(11), 1610. <https://doi.org/10.3390/w10111610>
- Baker, A., Hartmann, A., Duan, W., Hankin, S., Comas-Bru, L., Cuthbert, M. O., et al. (2019). Global analysis reveals climatic controls on the oxygen isotope composition of cave drip water. *Nature Communications*, 10(1), 2984. <https://doi.org/10.1038/s41467-019-11027-w>
- Banner, J. L., Guilfoyle, A., James, E. W., Stern, L. A., & Musgrove, M. (2007). Seasonal variations in modern speleothem calcite growth in central Texas, U.S.A. *Journal of Sedimentary Research*, 77(8), 615–622. <https://doi.org/10.2110/jsr.2007.065>
- Banner, J. L., Jackson, C. S., Yang, Z.-L., Hayhoe, K., Woodhouse, C. A., Gulden, L. E., et al. (2010). Climate change impacts on Texas water: A white paper assessment of the past, present and future and recommendations for action. *Texas Water Journal*, 1, 1.
- Barnett, D., Brown, S., Murphy, J., Sexton, D. H., & Webb, M. (2006). Quantifying uncertainty in changes in extreme event frequency in response to doubled CO₂ using a large ensemble of GCM simulations. *Climate Dynamics*, 26(5), 489–511. <https://doi.org/10.1007/s00382-005-0097-1>
- Berg, A., Sheffield, J., & Milly, P. C. D. (2017). Divergent surface and total soil moisture projections under global warming. *Geophysical Research Letters*, 44, 236–244. <https://doi.org/10.1002/2016GL071921>
- Bonan, G. (2016). *Ecological climatology: Concepts and applications* (third ed.). New York, NY: Cambridge University.
- Bruun, B. (2017). The regional water planning process: A Texas success story. *Texas Water Journal*, 8, 1–12.
- Bukovsky, M. S., McCrary, R. R., Seth, A., & Mearns, L. O. (2017). A mechanistically credible, poleward shift in warm-season precipitation projected for the U.S. Southern Great Plains. *Journal of Climate*, 30(20), 8275–8298. <https://doi.org/10.1175/JCLI-D-16-0316.1>
- Cartier, K. M. S. (2019). Bringing climate projections down to size for water managers. *Eos*, 100. <https://doi.org/10.1029/2019EO129291>
- Chen, C.-C., Gillig, D., & McCarl, B. A. (2001). Effects of climatic change on a water dependent regional economy—A study of the Texas Edwards Aquifer. *Climatic Change*, 49(4), 397–409. <https://doi.org/10.1023/A:1010617531401>
- Chen, Y., Marek, G. W., Marek, T. H., Moorhead, J. E., Heflin, K. R., Brauer, D. K., et al. (2018). Assessment of alternative agricultural land use options for extending the availability of the Ogallala Aquifer in the Northern High Plains of Texas. *Hydrology*, 5, 16 p(4), 53. <https://doi.org/10.3390/hydrology5040053>
- Chen, Y., Marek, G. W., Marek, T. H., Moorhead, J. E., Heflin, K. R., Brauer, D. K., et al. (2019). Simulating the impacts of climate change on hydrology and crop production in the Northern High Plains of Texas using an improved SWAT model. *Agricultural Water Management*, 221, 13–24. <https://doi.org/10.1016/j.agwat.2019.04.021>
- Cheng, L., Hoerling, M., Smith, L., & Eischeid, J. (2018). Diagnosing human-induced dynamic and thermodynamic drivers of extreme rainfall. <https://doi.org/10.1175/JCLI-D-16-0919.1>
- Chiang, F., Mazdiyasni, O., & AghaKouchak, A. (2018). Amplified warming of droughts in southern United States in observations and model simulations. *Science Advances*, 4(8), eaat2380. <https://doi.org/10.1126/sciadv.aat2380>
- Christian, L. N., Banner, J. L., & Mack, L. E. (2011). Sr isotopes as tracers of anthropogenic influences on stream water in the Austin, Texas, area. *Chemical Geology*, 282(3–4), 84–97. <https://doi.org/10.1016/j.chemgeo.2011.01.011>
- Cleaveland, M. K., Votteler, T. H., Stahle, D. K., Casteel, R. C., & Banner, J. L. (2011). Extended chronology of drought in South Central, Southeastern and West Texas. *Texas Water Journal*, 2, 54–96.
- Cook, B. I., Ault, T. R., & Smerdon, J. E. (2015). Unprecedented 21st century drought risk in the American Southwest and Central Plains. *Science Advances*, 1(1), e1400082. <https://doi.org/10.1126/sciadv.1400082>
- Cook, B. I., Seager, R., Williams, A. P., Puma, M. J., McDermid, S., Kelley, M., & Nazarenko, L. (2019). Climate change amplification of natural drought variability: The historic mid-twentieth-century North American drought in a warmer world. *Journal of Climate*, 32(17), 5417–5436. <https://doi.org/10.1175/JCLI-D-18-0832.1>
- Cook, B. I., Smerdon, J. E., Seager, R., & Cook, E. R. (2014). Pan-continental droughts in North America over the last millennium. *Journal of Climate*, 27(1), 383–397. <https://doi.org/10.1175/JCLI-D-13-00100.1>
- Cook, E. R., Seager, E. R., Heim, R. R. Jr., Vose, R. S., Herweijer, C., & Woodhouse, C. (2010). Megadroughts in North America: Placing IPCC projections of hydroclimatic change in a long-term palaeoclimate context. *Journal of Quaternary Science*, 25(1), 48–61. <https://doi.org/10.1002/jqs.1303>
- Cooke, M. J., Stern, L. A., Banner, J. L., Mack, L. E., Stafford, T. W., & Toomey, R. S. (2003). Precise timing and rate of massive late Quaternary soil denudation. *Geology*, 31, 853–856. <https://doi.org/10.1130/G19749.1>
- Dai, A., Zhao, T., & Chen, J. (2018). Climate change and drought: A precipitation and evaporation perspective. *Current Climate Change Reports*, 4(3), 301–312. <https://doi.org/10.1007/s40641-018-0101-6>
- Dawson, D., VanLandeghem, M. M., Asquith, W. H., & Patino, R. (2015). Long-term trends in reservoir water quality and quantity in two major river basins of the southern Great Plains. *Lake and Reservoir Management*, 31, 254–279.
- Deutsch, C. A., Tewksbury, J. J., Tigchelaar, M., Battisti, D. S., Merrill, S. C., Huey, R. B., & Naylor, R. L. (2018). Increase in crop losses to insect pests in a warming climate. *Science*, 361(6405), 916–919. <https://doi.org/10.1126/science.aat3466>
- Douville, H., & Plazzotta, M. (2017). Midlatitude summer drying: An underestimated threat in CMIP5 models? *Geophysical Research Letters*, 44, 9967–9975. <https://doi.org/10.1002/2017GL075353>
- Easterling, D. R., Kunkel, K. E., Arnold, J. R., Knutson, T., LeGrande, A. N., Leung, L. R. (2017). Precipitation change in the United States. In D. J. Wuebbles, D. W. Fahey, K. A. Hibbard, D. J. Dokken, B. C. Stewart, & T. K. Maycock (Eds.), *Climate science special report: Fourth*

- National Climate Assessment, volume I* (pp. 207–230). Washington, DC: U.S. Global Change Research Program. <https://doi.org/10.7930/J0H993CC>
- Fares, A., Bayabil, H. K., Zekri, M., Mattos, D. Jr., & Awal, R. (2017). Potential climate change impacts on citrus water requirement across major producing areas in the world. *Journal of Water and Climate*, 8(4), 576–592. <https://doi.org/10.2166/wcc.2017.182>
- Feng, W., Hardt, B. F., Banner, J. L., Meyer, K. J., James, E. W., Musgrove, M., et al. (2014). Changing amounts and sources of moisture in the U.S. southwest since the Last Glacial Maximum in response to global climate change. *Earth and Planetary Science Letters*, 401, 47–56. <https://doi.org/10.1016/j.epsl.2014.05.046>
- Ficklin, D. L., & Novick, K. A. (2017). Historic and projected changes in vapor pressure deficit suggest a continental-scale drying of the United States atmosphere. *Journal of Geophysical Research: Atmospheres*, 122, 2061–2079. <https://doi.org/10.1002/2016JD025855>
- Garbrecht, J. D., Zhang, X. C., Schneider, J. M., & Steiner, J. L. (2010). Utility of seasonal climate forecasting in management of winter-wheat grazing. *Applied Engineering in Agriculture*, 26(5), 855–866. <https://doi.org/10.13031/2013.34949>
- Gelca, R., Hayhoe, K., Scott-Fleming, I., Crow, C., Dawson, D., & Patino, R. (2015). Climate–water quality relationships in Texas reservoirs. *Hydrological Procedure*, 30, 12–29.
- George, P. G., Mace, R. E., & Petrossian, R. (2011). *Aquifers of Texas* (Rep. 380). Austin, TX: Texas Water Development Board.
- Giorgi, F., & Mearns, L. O. (1991). Approaches to the simulation of regional climate change: A review. *Reviews of Geophysics*, 29(2), 191–216. <https://doi.org/10.1029/90RG02636>
- Gleeson, T., Alley, W. M., Allen, D. M., Sophocleous, M. A., Zhou, Y., Taniguchi, M., & VanderSteen, J. (2011). Toward sustainable groundwater use: Setting long-term goals, backcasting, and managing adaptively. *Groundwater*, 50(1), 19–26. <https://doi.org/10.1111/j.1745-6584.2011.00825.x>
- Haddeland, I., Heinke, J., Beilman, H., Eisner, S., Flörke, M., Hanasaki, N., et al. (2014). Global water resources affected by human interventions and climate change. *Proceedings of the National Academy of Sciences*, 111(9), 3251–3256. <https://doi.org/10.1073/pnas.1222475110>
- Hansen, J., Ruedy, R., Sato, M., & Lo, K. (2010). Global surface temperature change. *Reviews of Geophysics*, 48, RG4004. <https://doi.org/10.1029/2010RG000345>
- Harrison, P. A., Holman, I. P., Cojocar, G., Kok, K., Kontogianni, A., Metzger, M. J., & Gramberger, M. (2013). Combining qualitative and quantitative understanding for exploring cross-sectoral climate change impacts, adaptation and vulnerability in Europe. *Regional Environmental Change*, 13(4), 761–780. <https://doi.org/10.1007/s10113-012-0361-y>
- Hayhoe, K., Edmonds, J., Kopp, R. E., LeGrande, A. N., Sanderson, B. M., Wehner, M. F., & Wuebbles, D. J. (2017). Climate models, scenarios, and projections. In D. J. Wuebbles, D. W. Fahey, K. A. Hibbard, D. J. Dokken, B. C. Stewart, & T. K. Maycock (Eds.), *Climate science special report: Fourth National Climate Assessment, volume I* (pp. 133–160). Washington, DC: U.S. Global Change Research Program. <https://doi.org/10.7930/J0WH2N54>
- Hayhoe, K., Gelca, R., Baumer, Z., Gold, G. (2016). Integrating climate projections into multi-level city planning: A Texas case study. Paper presented at American Geophysical Union Fall Meeting, San Francisco, CA, Abstract A13I-0396.
- Hoerling, M., Kumar, A., Dole, R., Nielsen-Gammon, J. W., Eischeid, J., Perlwitz, J., et al. (2013). Anatomy of an extreme event. *Journal of Climate*, 26(9), 2811–2832. <https://doi.org/10.1175/JCLI-D-12-00270.1>
- IPCC (2013). In Stocker, T. F., D. Qin, G.-K. Plattner, M. Tignor, S. K. Allen, J. Boschung, et al. (eds.), *Climate change 2013: The physical science basis. Contribution of Working Group I to the Fifth Assessment Report of the Intergovernmental Panel on Climate Change*. Cambridge, UK and New York, NY: Cambridge University. <https://doi.org/10.1017/CBO9781107415324>
- Jiang, X., & Yang, Z.-L. (2012). Projected changes of temperature and precipitation in Texas from downscaled global climate models. *Climate Research*, 53(3), 229–244. <https://doi.org/10.3354/cr01093>
- Jones, C. D., Robertson, E., Arora, V., Friedlingstein, P., Shevliakova, E., Bopp, L., et al. (2013). Twenty-first-century compatible CO₂ emissions and airborne fraction simulated by CMIP5 Earth system models under four representative concentration pathways. *Journal of Climate*, 26(4), 398–4413.
- Keyantash, J., & Dracup, J. A. (2002). The quantification of drought: An evaluation of drought indices. *Bulletin of the American Meteorological Society*, 93, 1167–1180.
- Kirchhoff, C. J., & Dilling, L. (2016). The role of U.S. states in facilitating effective water governance under stress and change. *Water Resources Research*, 52, 2951–2964. <https://doi.org/10.1002/2015WR018431>
- Klemm, T., & McPherson, R. A. (2017). The development of seasonal climate forecasting for agricultural producers. *Agricultural and Forest Meteorology*, 232, 384–399. <https://doi.org/10.1016/j.agrformet.2016.09.005>
- Klemm, T., & McPherson, R. A. (2018). Assessing decision timing and seasonal climate forecast needs of winter wheat producers in the south-central United States. *Journal of Applied Meteorology and Climatology*, 57(9), 2129–2140. <https://doi.org/10.1175/JAMC-D-17-0246.1>
- Kloesel, K., Bartush, B., Banner, J. L., Brown, D., Lemory, J., Lin, X., et al. (2018). Southern Great Plains. In D. R. Reidmiller, C. W. Avery, D. R. Easterling, K. E. Kunkel, K. L. M. Lewis, T. K. Maycock, & B. C. Stewart (Eds.), *Impacts, risks, and adaptation in the United States: Fourth National Climate Assessment, volume II* (pp. 987–1035). Washington, DC: U.S. Global Change Research Program. <https://doi.org/10.7930/NCA4.2018.CH23>
- Kothari, K., Ale, S., Bordovsky, J. P., & Munster, C. L. (2020). Assessing the climate change impacts on grain sorghum yield and irrigation water use under full and deficit irrigation strategies. *Transactions of the ASABE*, 63(1), 81–94. <https://doi.org/10.13031/trans.13465>
- Kusunose, Y., & Mahmood, R. (2016). Imperfect forecasts and decision making in agriculture. *Agricultural Systems*, 146, 103–110. <https://doi.org/10.1016/j.agry.2016.04.006>
- Lee, K., Gao, H., Huang, M., Sheffield, J., & Shi, X. (2017). Development and application of improved long term datasets of surface hydrology for Texas. *Advances in Meteorology*, 2017, 1–13. <https://doi.org/10.1155/2017/8485130>
- Lemondant, L., Gentile, P., Swann, A. S., Cook, B. I., & Scheff, J. (2018). Critical impact of vegetation physiology on the continental hydrologic cycle in response to increasing CO₂. *Proceedings of the National Academy of Sciences*, 115(16), 4093–4098. <https://doi.org/10.1073/pnas.1720712115>
- Lemos, M. C., Kirchhoff, C. J., & Ramprasad, V. (2012). Narrowing the climate information usability gap. *Nature Climate Change*, 2(11), 789–794. <https://doi.org/10.1038/NCLIMATE1614>
- Liang, X., Lettenmaier, D. P., Wood, E. F., & Burges, S. J. (1994). A simple hydrologically based model of land surface water and energy fluxes for general circulation models. *Journal of Geophysical Research*, 99(D7), 14,415–14,428. <https://doi.org/10.1029/94JD00483>
- Livneh, B., Rosenberg, E. A., Lin, C., Nijssen, B., Mishra, V., Kostas, M. A., et al. (2013). A long-term hydrologically based dataset of land surface fluxes and states for the conterminous United States: Update and extensions. *Journal of Climate*, 26(9), 384–9392.

- Livsey, D., Simms, A., Hangsterfer, A., Nisbet, R., & DeWitt, R. (2016). Drought modulated by North Atlantic sea surface temperatures for the last 3,000 years along the northwestern Gulf of Mexico. *Quaternary Science Reviews*, 135, 54–64. <https://doi.org/10.1016/j.quascirev.2016.01.010>
- Loáiciga, H. A., Maidment, D. R., & Valdes, J. B. (2000). Climate-change impacts in a regional karst aquifer, Texas, USA. *Journal of Hydrology*, 227(1-4), 173–194. [https://doi.org/10.1016/S0022-1694\(99\)00179-1](https://doi.org/10.1016/S0022-1694(99)00179-1)
- Loáiciga, H. A., Valdes, J. B., Vogel, R., Garvey, J., & Schwarz, H. H. (1996). Global warming and the hydrologic cycle. *Journal of Hydrology*, 174(1-2), 83–127. [https://doi.org/10.1016/0022-1694\(95\)02753-X](https://doi.org/10.1016/0022-1694(95)02753-X)
- Mace, R. E., & Wade, S. C. (2008). In hot water? How climate change may (or may not) affect the groundwater resources of Texas. *Gulf Coast Association of Geological Societies Transactions*, 58, 655–668.
- Mallakpour, I., AghaKouchak, A., & Sadegh, M. (2019). Climate-induced changes in the risk of hydrological failure of major dams in California. *Geophysical Research Letters*, 46, 2130–2139. <https://doi.org/10.1029/2018GL081000>
- Maloney, E. D., Camargo, S. J., Chang, E., Colle, B., Fu, R., Geil, K. L., et al. (2014). North American climate in CMIP5 experiments: Part III: Assessment of twenty-first-century projections. *Journal of Climate*, 27(6), 2230–2270. <https://doi.org/10.1175/JCLI-D-13-00273.1>
- Mase, A. S., & Prokopy, L. S. (2014). Unrealized potential: A review of perceptions and use of weather and climate information in agricultural decision making. *Weather, Climate, and Society*, 6(1), 47–61. <https://doi.org/10.1175/WCAS-D-12-00062.1>
- Maurer, E. P., Wood, A. W., Adam, J. C., Lettenmaier, D. P., & Nijssen, B. (2002). A long-term hydrologically-based data set of land surface fluxes and states for the conterminous United States. *Journal of Climate*, 15(3), 237–325.
- McCabe, G. J., Palecki, M. A., & Betancourt, J. L. (2004). Pacific and Atlantic Ocean influences on multidecadal drought frequency in the United States. *Proceedings of the National Academy of Sciences of the United States of America*, 101(4), 136–141.
- McGregor, K. M. (2015). Comparison of the recent drought in Texas to the drought of record using reanalysis modeling. *Papers in Applied Geography*, 1(1), 34–42. <https://doi.org/10.1080/23754931.2015.1009295>
- McMahon, P. B., Plummer, L. N., Bohlke, J. K., Shapiro, S. D., and Hinkle, S. R. (2011). A comparison of recharge rates in aquifers of the United State based on groundwater-age data. *Hydrogeol Journalism*, 19(4) 779–800. <https://doi.org/10.1007/s10040-011-0722-5>
- Miller, N. R., & Banner, J. L. (2018). Central Texas hydroclimate response to the Bolling deglacial rapid warming event: Perspectives from cave monitoring, high-resolution speleothem imaging and isotopic analysis. Paper presented at American Geophysical Union Fall Meeting, New Orleans, LA, Abstract PP23D-1512.
- Milly, P. C. D., & Dunne, K. A. (2016). Potential evapotranspiration and continental drying. *Nature Climate Change*, 6(10), 946–949. <https://doi.org/10.1038/nclimate3046>
- Milly, P. C. D., Dunne, K. A., & Vecchia, A. V. (2005). Global pattern of trends in streamflow and water availability in a changing climate. *Nature*, 438(7066), 347–350. <https://doi.org/10.1038/nature04312>
- Modala, N. R., Ale, S., Goldberg, D. W., Olivares, M., Munster, C. L., Rajan, N., & Feagin, R. A. (2017). Climate change projections for the Texas High Plains and Rolling Plains. *Theoretical and Applied Climatology*, 129(1-2), 263–280. <https://doi.org/10.1007/s00704-016-1773-2>
- Montagna, P. A., & Kalke, R. D. (1992). The effect of freshwater inflow on meiofaunal and macrofaunal populations in the Guadalupe and Nueces estuaries, Texas. *Estuaries*, 15(3), 307–326. <https://doi.org/10.2307/1352779>
- Moore, G. W., Edgar, C. B., Vogel, J. G., Washington-Allen, R. A., March, R. G., & Zehnder, R. (2016). Tree mortality from an exceptional drought spanning mesic to semiarid ecoregions. *Ecological Applications*, 26(2), 602–611. <https://doi.org/10.1890/15-0330>
- Moore, J. G. (2005). A half century of water resource planning and policy, 1950–2000. In J. Norwine, J. R. Giardino, & S. Krishnamurthy (Eds.), *Water for Texas* (pp. 5–16). College Station, TX: Texas A&M University Press.
- Morice, C. P., Kennedy, J. J., Rayner, N. A., & Jones, P. (2012). Quantifying uncertainties in global and regional temperature change using an ensemble of observational estimates: The HadCRUT4 data set. *Journal of Geophysical Research*, 117, D08101. <https://doi.org/10.1029/2011jd017187>
- Morison, J. I. L. (1985). Sensitivity of stomata and water use efficiency to high CO₂. *Plant, Cell & Environment*, 8(6), 467–474. <https://doi.org/10.1111/j.1365-3040.1985.tb01682.x>
- Moss, R. H., Avery, S., Baja, K., Burkett, M., Chischilly, A. M., Dell, J., et al. (2019). Evaluating knowledge to support climate action: A framework for sustained assessment. Report of an Independent Advisory Committee on Applied Climate Assessment. *Weather, Climate, and Society*, 11(3), 465–487. <https://doi.org/10.1175/WCAS-D-18-0134.1>
- Mukherjee, S., Mishra, A., & Trenberth, K. E. (2018). Climate change and drought: A perspective on drought indices. *Current Climate Change Reports*, 4(2), 145–163. <https://doi.org/10.1007/s40641-018-0098-x>
- Musgrove, M., Banner, J. L., Mack, L. E., Combs, D. M., James, E. W., Cheng, H., & Edwards, R. L. (2001). Geochronology of late Pleistocene to Holocene speleothems from central Texas: Implications for regional paleoclimate. *Geological Society of America Bulletin*, 113(12), 1532–1543. [https://doi.org/10.1130/0016-7606\(2001\)113<1532:GOLPTH>2.0.CO;2](https://doi.org/10.1130/0016-7606(2001)113<1532:GOLPTH>2.0.CO;2)
- NASEM (2019). *Making climate assessments work: Learning from California and other subnational climate assessments—Proceedings of a workshop*. National Academies of Sciences, Engineering, and Medicine, Washington, DC: National Academies Press. <https://doi.org/10.17226/25324>
- Nielsen-Gammon, J. W. (2012). The 2011 Texas drought. *Texas Water Journal*, 3, 59–95.
- Nijssen, B., O'Donnell, G. M., Hamlet, A. F., & Lettenmaier, D. P. (2001). Hydrologic sensitivity of global rivers to climate change. *Climatic Change*, 50(1/2), 143–175. <https://doi.org/10.1023/A:1010616428763>
- Oki, T., & Kanae, S. (2006). Global hydrological cycles and world water resources. *Science*, 313(5790), 1068–1072. <https://doi.org/10.1126/science.1128845>
- Oubeidillah, A. A., Kao, S.-C., Ashfaq, M., Naz, B. S., & Tootle, G. (2014). A large-scale, high-resolution hydrological model parameter data set for climate change impact assessment for the conterminous US. *Hydrology and Earth System Sciences*, 18(1), 67–84. <https://doi.org/10.5194/hess-18-67-2014>
- Palmer, W. (1965). *Meteorological drought* (Research Paper No. 45). Washington, DC: U.S. Department of Commerce Weather Bureau. <http://www.ncdc.noaa.gov/temp-and-precip/drought/docs/palmer.pdf>
- Pendergrass, A. G., Knutti, R., Lehner, F., Deser, C., & Sanderson, B. M. (2017). Precipitation variability in a warmer climate. *Scientific Reports*, 7, 16966. <https://doi.org/10.1038/s41598-017-17966-y>
- Penman, H. L. (1948). Natural evaporation from open water, bare soil, and grass. *Proceedings of the Royal Society of London A*, 193, 27p(1032), 120–145. <https://doi.org/10.1098/rspa.1948.0037>
- Powell, J. W. (1879). *Report on the lands of the arid region of the United States with a more detailed account of the land of Utah with maps*. US Geological Survey Unnumbered Series Monograph. Washington, D.C.: Government Printing Office.
- Reclamation. (2013). *Downscaled CMIP3 and CMIP5 climate projections: Release of downscaled CMIP5 climate projections, comparison with preceding information, and summary of user needs*. U.S. Department of the Interior, Bureau of Reclamation, Technical Service

- Center, Denver, Colorado, 104 p. Available from: http://gdo-dcp.ucllnl.org/downscaled_cmip_projections/techmemo/downscaled_climate.pdf
- Reddy, S. M. W., McDonald, R. I., Maas, A. S., Rogers, A., Girvetz, E. H., North, J., et al. (2015). Finding solutions to water scarcity: Incorporating ecosystem service values into business planning at The Dow Chemical Company's Freeport, TX facility. *Ecosystem Services*, 12, 94–107. <https://doi.org/10.1016/j.ecoser.2014.12.001>
- Ryu, J.-H., & Hayhoe, K. (2017). Observed and CMIP5 modeled influence of large-scale circulation on summer precipitation and drought in the South-Central United States. *Climate Dynamics*, 49(11–12), 4293–4310. <https://doi.org/10.1007/s00382-017-3534-z>
- Samady, K. (2017). *Continuous hydrologic modeling for analyzing the effects of drought on the Lower Colorado River in Texas* (master's thesis). Houghton, MI: Michigan Technological University.
- Scanlon, B. R., Reedy, R. C., & Tachovsky, J. A. (2007). Semiarid unsaturated zone chloride profiles: Archives of past land use change impacts on water resources in the southern High Plains, United States. *Water Resources Research*, 43, W06423. <https://doi.org/10.1029/2006WR005769>
- Scheff, J. (2018). Drought indices, drought impacts, CO₂, and warming: A historical and geologic perspective. *Current Climate Change Reports*, 4(2), 202–209. <https://doi.org/10.1007/s40641-018-0094-1>
- Schewe, J., Heinke, J., Gerten, D., Haddeland, I., Arnell, N. W., Clark, D. B., et al. (2014). Multimodel assessment of water scarcity under climate change. *Proceedings of the National Academy of Sciences of the United States of America*, 111(9), 3245–3250. <https://doi.org/10.1073/pnas.1222460110>
- Schwantes, A. M., Swenson, J. J., González-Roglich, M., Johnson, D. M., Domec, J.-C., & Jackson, R. B. (2017). Measuring canopy loss and climatic thresholds from an extreme drought along a fivefold precipitation gradient across Texas. *Global Change Biology*, 23(5), 120–135. <https://doi.org/10.1111/gcb.13775>
- Seager, R., Feldman, J., Lis, N., Ting, M., Williams, A. P., Nakamura, J., et al. (2018). Whither the 100th meridian? The once and future physical and human geography of America's arid–humid divide. Part II: The meridian moves east. *Earth Interactions*, 22, 1–24.
- Seager, R., Lis, N., Feldman, J., Ting, M., Williams, A. P., Nakamura, J., et al. (2018). Whither the 100th meridian? The once and future physical and human geography of America's arid–humid divide. Part I: The story so far. *Earth Interactions*, 22, 1–22.
- Sellers, P. J., Bounoua, L., Collatz, G. J., Randall, D. A., Dazlich, D. A., Los, S. O., et al. (1996). Comparison of radiative and physiological effects of doubled atmospheric CO₂ on climate. *Science*, 271(5254), 1402–1406. <https://doi.org/10.1126/science.271.5254.1402>
- Sharp, J. M. Jr., Krothe, J. N., Mather, J. D., Garcia-Fresca, B., & Stewart, C. A. (2003). Effects of urbanization on groundwater systems. In *Earth science in the city: A reader, Special Publications Series* (Vol. 56, pp. 257–278). Washington, DC: American Geophysical Union. <https://doi.org/10.1029/SP056>
- Slater, L., Villarini, G., & Bradley, A. (2016). Evaluation of the skill of North-American Multi-Model Ensemble (NMME) global climate models in predicting average and extreme precipitation and temperature over the continental USA. *Climate Dynamics*, 53, 7381–7396. <https://doi.org/10.1007/s00382-016-3286-1>
- Steiner, J. L., Briske, D. D., Brown, D. P., & Rottler, C. M. (2017). Vulnerability of Southern Plains agriculture to climate change. *Climatic Change*, 146(1–2), 201–218. <https://doi.org/10.1007/s10584-017-1965-5>
- Swann, A. L. S. (2018). Plants and drought in a changing climate. *Current Climate Change Reports*, 4(2), 192–201. <https://doi.org/10.1007/s40641-018-0097-y>
- Swann, A. L. S., Hoffman, F. M., Koven, C. D., & Randerson, J. T. (2016). Plant responses to increasing CO₂ reduce estimates of climate impacts on drought severity. *Proceedings of the National Academy of Sciences*, 113(36), 10,019–10,024. <https://doi.org/10.1073/pnas.1604581113>
- Taylor, R. G., Scanlon, B., Döll, P., Rodell, M., van Beek, R., Wada, Y., et al. (2013). Ground water and climate change. *Nature Climate Change*, 3(4), 322–329. <https://doi.org/10.1038/NCLIMATE1744>
- Teng, J., Vaze, J., Chiew, F. H. S., Wang, B., & Perraud, J.-M. (2012). Estimating the relative uncertainties sourced from GCMs and hydrologic models in modeling climate change impact on runoff. *Journal of Hydrometeorology*, 13(1), 122–139. <https://doi.org/10.1175/JHM-D-11-058.1>
- Texas Water Development Board. (1984). Water for Texas: A comprehensive plan for the future. Retrieved from http://www.twdb.texas.gov/publications/State_Water_Plan/1984/Water%20for%20Texas%20Volume%201.pdf; d=3508.8700000196695
- Texas Water Development Board. (1990). Water for Texas: Today and tomorrow. Retrieved from http://www.twdb.texas.gov/publications/State_Water_Plan/1990/1990%20State%20Water%20Plan.pdf; d=2126.420000102371
- Texas Water Development Board. (1997). Water for Texas: A consensus-based update to the State Water Plan. Retrieved from http://www.twdb.texas.gov/publications/State_Water_Plan/1997/table-of-contents.pdf; d=2524.6649999171495
- Texas Water Development Board. (2017). Water for Texas 2017. Retrieved from <https://www.twdb.texas.gov/waterplanning/swp/2017/doc/SWP17-Water-for-Texas.pdf>; d=18862.195000052452
- Texas Water Development Board. (2019). Texas water use estimates: 2017 summary. Retrieved from <http://www.twdb.texas.gov/water-planning/waterusesurvey/estimates/data/2017TexasWaterUseEstimatesSummary.pdf>; d=46611.31999990903
- Tietjen, B., Schlaepfer, D. R., Bradford, J. B., Lauenroth, W. K., Hall, S. A., Duniway, M. C., et al. (2016). Climate change-induced vegetation shifts lead to more ecological droughts despite projected rainfall increases in many global temperate drylands. *Global Change Biology*, 23(), 743–754. <https://doi.org/10.1111/gcb.13598>
- Toomey, R. S., Blum, M. D., & Valastro, S. (1993). Late Quaternary climates and environments of the Edwards Plateau, Texas. *Global and Planetary Change*, 7(4), 299–320. [https://doi.org/10.1016/0921-8181\(93\)90003-7](https://doi.org/10.1016/0921-8181(93)90003-7)
- Uddameri, V., Singaraju, S., & Hernandez, E. A. (2014). Impacts of sea-level rise and urbanization on groundwater availability and sustainability of coastal communities in semi-arid South Texas. *Environment and Earth Science*, 71(2), 503–2515.
- USGCRP. (2017). In D. J. Wuebbles, D. W. Fahey, K. A. Hibbard, D. J. Dokken, B. C. Stewart, & T. K. Maycock (Eds.), *Climate science special report: Fourth National Climate Assessment, volume I*. Washington, DC: U.S. Global Change Research Program. <https://doi.org/10.7930/J0J964J6>
- van Vuuren, D. P., Edmonds, J., Kainuma, M., Riahi, K., Thomson, A., Hibbard, K., et al. (2011). The representative concentration pathways: An overview. *Climatic Change*, 109(1–2), 5–31. <https://doi.org/10.1007/s10584-011-0148-z>
- Ventakaraman, K., Tummuri, S., Medina, A., & Perry, J. (2016). 21st century drought outlook for major climate divisions of Texas based on CMIP5 multimodel ensemble: Implications for water resource management. *Journal of Hydrology*, 534, 300–316. <https://doi.org/10.1016/j.jhydrol.2016.01.001>
- Vose, R. S., Applequist, S., Squires, M., Durre, I., Menne, M. J., Williams, C. N. Jr., et al. (2014). Improved historical temperature and precipitation time series for U.S. climate divisions. *Journal of Applied Meteorology and Climatology*, 53(5), 1232–1251. <https://doi.org/10.1175/JAMC-D-13-0248.1>

- Wigmosta, M. S., Vail, L. W., & Lettenmaier, D. P. (1994). A distributed hydrology-vegetation model for complex terrain. *Water Resources Research*, 30(6), 1665–1679. <https://doi.org/10.1029/94WR00436>
- Wilhite, D. A., & Glantz, M. H. (1985). Understanding the drought phenomenon: The role of definitions. *Water International*, 10(3), 111–120. <https://doi.org/10.1080/02508068508686328>
- Williams, A. P., Cook, E. R., Smerdon, J. E., Cook, B. I., Abatzoglou, J. T., Bolles, K., et al. (2020). Large contribution from anthropogenic warming to an emerging North American megadrought. *Science*, 368(6488), 314–318. <https://doi.org/10.1126/science.aaz9600>
- Williams, A. P., Seager, R., Abatzoglou, J. T., Cook, B. I., Smerdon, J. E., & Cook, E. R. (2015). Contribution of anthropogenic warming to California drought during 2012–2014. *Geophysical Research Letters*, 42, 6819–6828. <https://doi.org/10.1002/2015GL064924>
- Witham, J. (2015). *Calibration, verification, and diagnosis of a season-ahead drought prediction model: Limits to predictability in central Texas* (master's thesis). Houghton, MI: Michigan Technological University.
- Wong, C., Banner, J. L., & Musgrove, M. (2015). Holocene climate variability in Texas, USA: An integration of existing paleoclimate data and modeling with a new, high-resolution speleothem record. *Quaternary Science Reviews*, 127, 155–173. <https://doi.org/10.1016/j.quascirev.2015.06.023>
- Wong, C., Mahler, B. J., Musgrove, M., & Banner, J. L. (2012). Changes in sources and storage in a karst aquifer during a transition from drought to wet conditions. *Journal of Hydrology*, 468–469, 159–172.
- Wood, A. W., Leung, L. R., Sridhar, V., & Lettenmaier, D. P. (2004). Hydrologic implications of dynamical and statistical approaches to downscaling climate model outputs. *Climatic Change*, 62(1–3), 189–216. <https://doi.org/10.1023/B:CLIM.0000013685.99609.9e>
- Wurbs, R. A. (2005). Texas water availability modeling system. *Journal of Water Resources Planning and Management*, 131(4), 270–279. [https://doi.org/10.1061/\(ASCE\)0733-9496\(2005\)131:4\(270\)](https://doi.org/10.1061/(ASCE)0733-9496(2005)131:4(270))
- Yoon, J.-H., Wang, S.-Y. S., Lo, M.-H., & Wu, W.-Y. (2018). Concurrent increases in wet and dry extremes projected in Texas and combined effects on groundwater. *Environmental Research Letters*, 13(5), 054002. <https://doi.org/10.1088/1748-9326/aab96b>
- Zhang, X., Tang, Q., Pan, M., & Tang, Y. (2014). A long-term land surface hydrologic fluxes and states dataset for China. *Journal of Hydrometeorology*, 15(5), 2067–2084. <https://doi.org/10.1175/JHM-D-13-0170.1>
- Zhao, G., Gao, H., Kao, S. C., Voisin, N., & Naz, B. S. (2018). A modeling framework for evaluating the drought resilience of a surface water supply system under non-stationarity. *Journal of Hydrology*, 563, 22–32. <https://doi.org/10.1016/j.jhydrol.2018.05.037>
- Zhao, G., Gao, H., Naz, B. S., Kao, S. C., & Voisin, N. (2016). Integrating a reservoir regulation scheme into a spatially distributed hydrological model. *Advances in Water Resources*, 98, 16–31. <https://doi.org/10.1016/j.advwatres.2016.10.014>
- Zhou, Y., Clarke, L., Eom, J., Kyle, P., Patel, P., Kim, S. H., et al. (2014). Modeling the effect of climate change on U.S. state-level buildings energy demands in an integrated assessment framework. *Applied Energy*, 113, 1077–1088. <https://doi.org/10.1016/j.apenergy.2013.08.034>